

1. PART NO. EXPRESSION :

PDB0805101MZ F
 (a) (b) (c) (d)(e)(f)

(a) Series code

(b) Dimension code

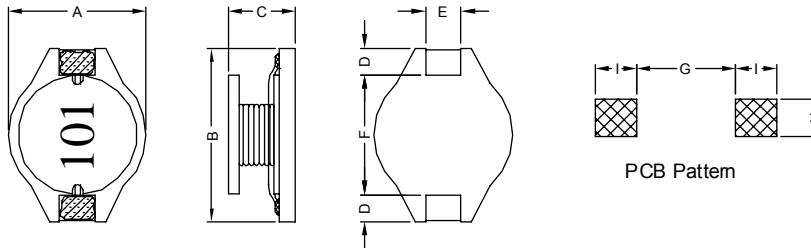
(c) Inductance code : 101 = 100uH

(d) Tolerance code : M = ±20%

(e) Z : Standard part

(f) F : RoHS Compliant

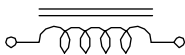
2. CONFIGURATION & DIMENSIONS :



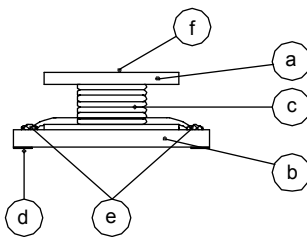
Unit:m/m

A	B	C	D	E	F	G	H	I
8.0±0.3	10.5±0.2	5.0±0.3	2.1±0.2	2.0±0.2	6.0±0.3	5.7 Ref.	2.2 Ref.	2.4 Ref.

3. SCHEMATIC :



4. MATERIALS :



(a) Core

(b) Base

(c) Wire

(d) Terminal

(e) Adhesive

(f) Ink

5. GENERAL SPECIFICATION :

- a) Temp. rise : 40° C Max. at Rated Current.
- b) Rated current : Base on Temp. Rise & ΔL/L0A = 10% Max.
- c) Operating temp. : -40° C to +85° C
- d) Storage condition (component in its packaging)
 - i) Temperature : -10 to 40° C
 - ii) Humidity : 60%
- e) Resistance to solder heat : 260° C.10 secs



RoHS Compliant

NOTE : Specifications subject to change without notice. Please check our website for latest information.

14.11.2014



SUPERWORLD ELECTRONICS (S) PTE LTD

6. ELECTRICAL CHARACTERISTICS :

Part No.	Inductance (μ H)	Q Ref.	Test Frequency (Hz)	SRF (MHz) Typ.	RDC (m Ω) Max.	IDC (A)
PDB08053R3MZF	3.3 \pm 20%	40	1V / 100K	50.0	30	3.70
PDB08054R7MZF	4.7 \pm 20%	30	1V / 100K	40.0	35	3.30
PDB08056R8MZF	6.8 \pm 20%	30	1V / 100K	30.0	50	2.70
PDB0805100MZF	10.0 \pm 20%	25	1V / 100K	23.0	60	2.30
PDB0805150MZF	15.0 \pm 20%	25	1V / 100K	20.0	80	2.10
PDB0805220MZF	22.0 \pm 20%	25	1V / 100K	16.0	130	1.60
PDB0805330MZF	33.0 \pm 20%	25	1V / 100K	12.0	180	1.30
PDB0805470MZF	47.0 \pm 20%	45	1V / 100K	11.0	260	1.10
PDB0805680MZF	68.0 \pm 20%	35	1V / 100K	9.0	350	1.10
PDB0805101MZF	100.0 \pm 20%	55	1V / 100K	7.0	580	0.70
PDB0805151MZF	150.0 \pm 20%	50	1V / 100K	5.0	750	0.60
PDB0805221MZF	220.0 \pm 20%	55	1V / 100K	4.0	1050	0.50
PDB0805331MZF	330.0 \pm 20%	50	1V / 100K	3.5	1600	0.45



RoHS Compliant

NOTE : Specifications subject to change without notice. Please check our website for latest information.

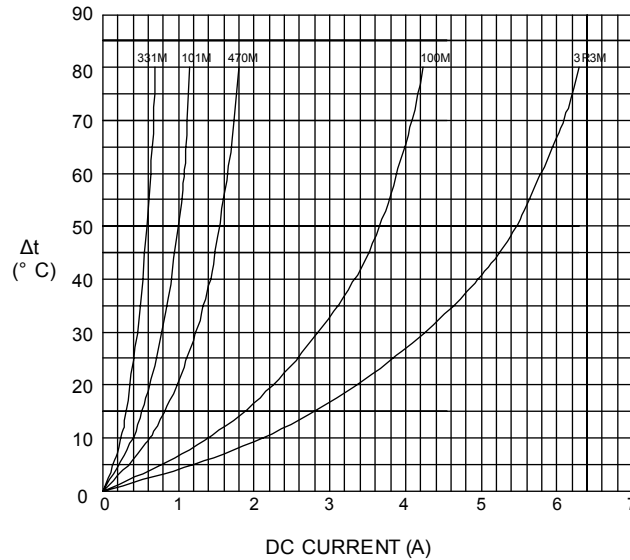
14.11.2014



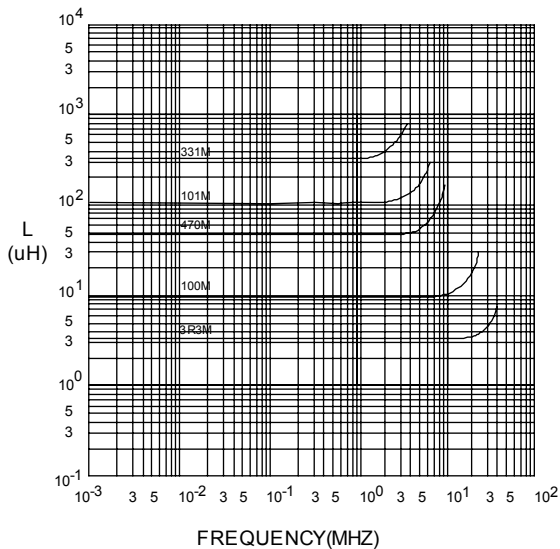
SUPERWORLD ELECTRONICS (S) PTE LTD

6. ELECTRICAL CHARACTERISTICS :

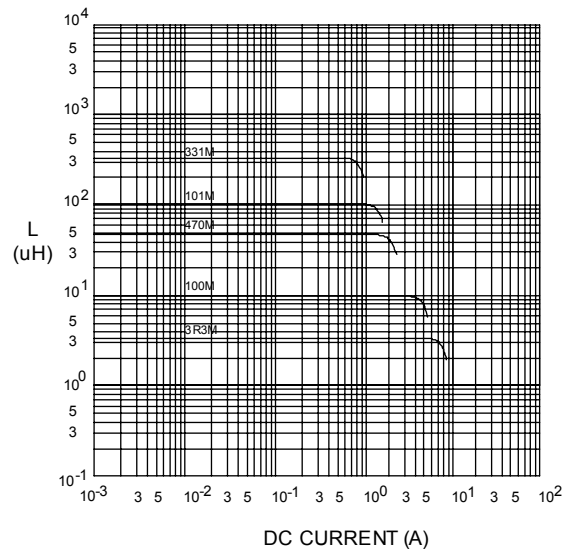
@ TEMP. RISE VS. DC SUPERPOSITION RESPONSE CURVE



@ INDUCTANCE VS. FREQUENCY RESPONSE CURVE



@ INDUCTANCE VS. DC SUPERPOSITION RESPONSE CURVE



NOTE : Specifications subject to change without notice. Please check our website for latest information.



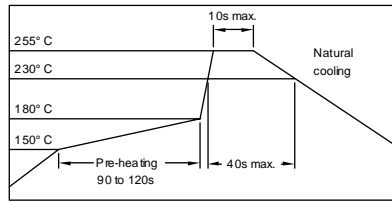
RoHS Compliant

14.11.2014



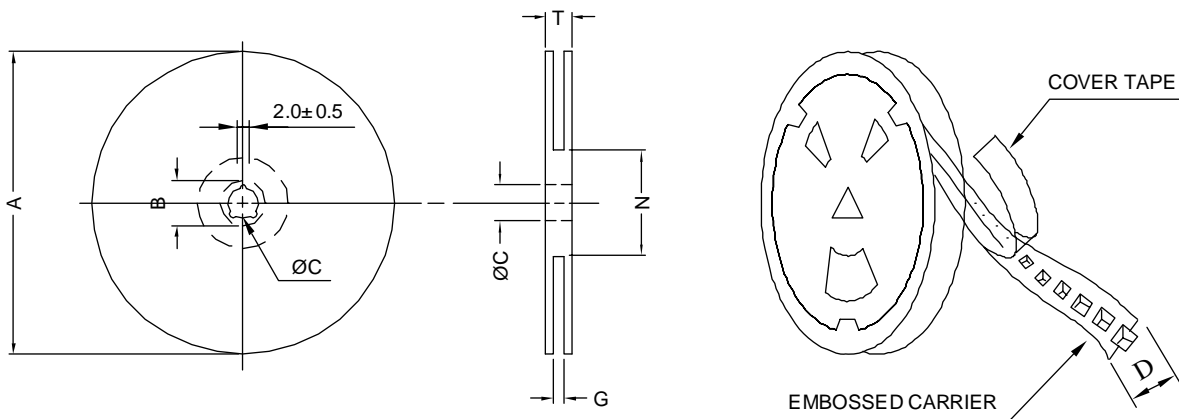
SUPERWORLD ELECTRONICS (S) PTE LTD

RECOMMENDED SOLDERING CONDITIONS REFLOW SOLDERINGS

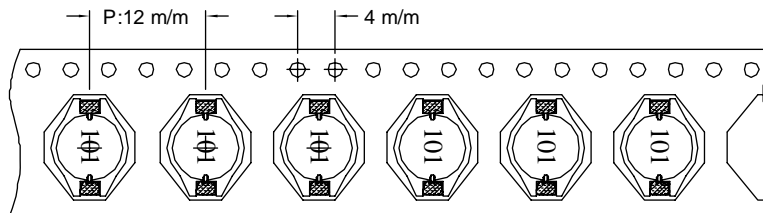


8. PACKAGING INFORMATION :

(1) CONFIGURATION



* CARRIER TAPE WIDTH : D



(2) DIMENSIONS

Unit:m/m

STYLE	A	B	C	D	G	N	T
13-24	330	21±0.8	13	24	26 ⁺⁰	50 ⁻⁰	30.4

(3) QTY & G.W. PER PACKAGE

SERIES	INNER : REEL			OUTER : CARTON		
	QTY (PCS)	G.W. (gw)	STYLE	QTY (PCS)	G.W. (Kg)	SIZE (cm)
PDB0805	1,000	1,000	13-24	4,000	7.5	40 x 40 x 24



RoHS Compliant

NOTE : Specifications subject to change without notice. Please check our website for latest information.

14.11.2014



SUPERWORLD ELECTRONICS (S) PTE LTD