

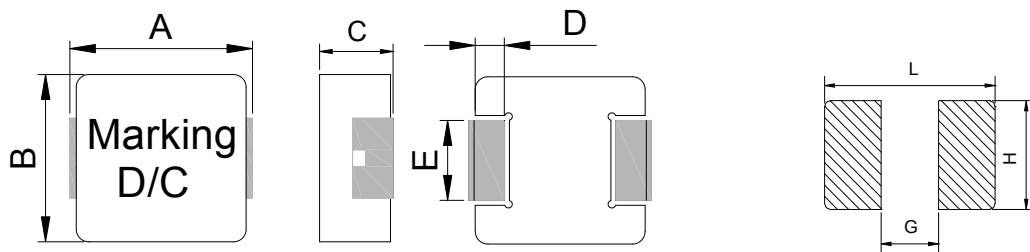
1. Part No. Expression:

PIAQ0602S1R0MN

(a) (b) (c) (d) (e)

- a) Series Code d) Inductance Code
 b) Dimension Code e) Tolerance Code
 c) Type Code

2. Configuration & Dimensions:



Note:

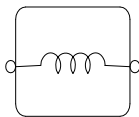
1. The above PCB layout is for reference only.
2. Solder paste thickness of 0.15mm and above is recommended.
3. Marking: Top row – Inductance code, Bottom row – YYWW.

Recommended PC Board

Unit: mm

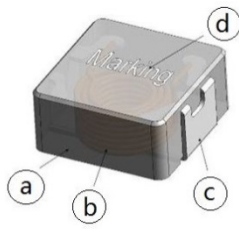
| A | B | C | D | E | L | G | H |
|---------|---------|---------|---------|---------|----------|----------|----------|
| 7.1±0.3 | 6.6±0.2 | 1.8±0.2 | 1.6±0.3 | 3.0±0.2 | 8.0 Ref. | 3.7 Ref. | 3.4 Ref. |

3. Schematic:



NOTE: Specifications subject to change without notice. Please check our website for latest information.

4. Material List:



- a) Core
- b) Wire
- c) Terminal
- d) Ink

5. General Specification:

- (a) Reliability test for this part meets AEC-Q200 standard
- (b) Operating Temp. : -55°C to +155°C (Including self - temperature rise).
- (c) Storage Temp. : -55°C to +155°C (on board).
- (d) Humidity Range. : 85 ± 3% RH.
- (e) Heat Rated Current (Irms) will cause the coil temperature rise approximately ΔT of 40°C.
- (f) Saturation Current (Isat) will cause L0 to drop approximately 30%.
- (g) Part Temp. (Ambient+Temp. Rise) should not exceed 155°C under worst case operating conditions.
- (h) Storage condition (component in its packaging)
 - i) Temperature: Less than 40°C
 - ii) Humidity : 60% RH

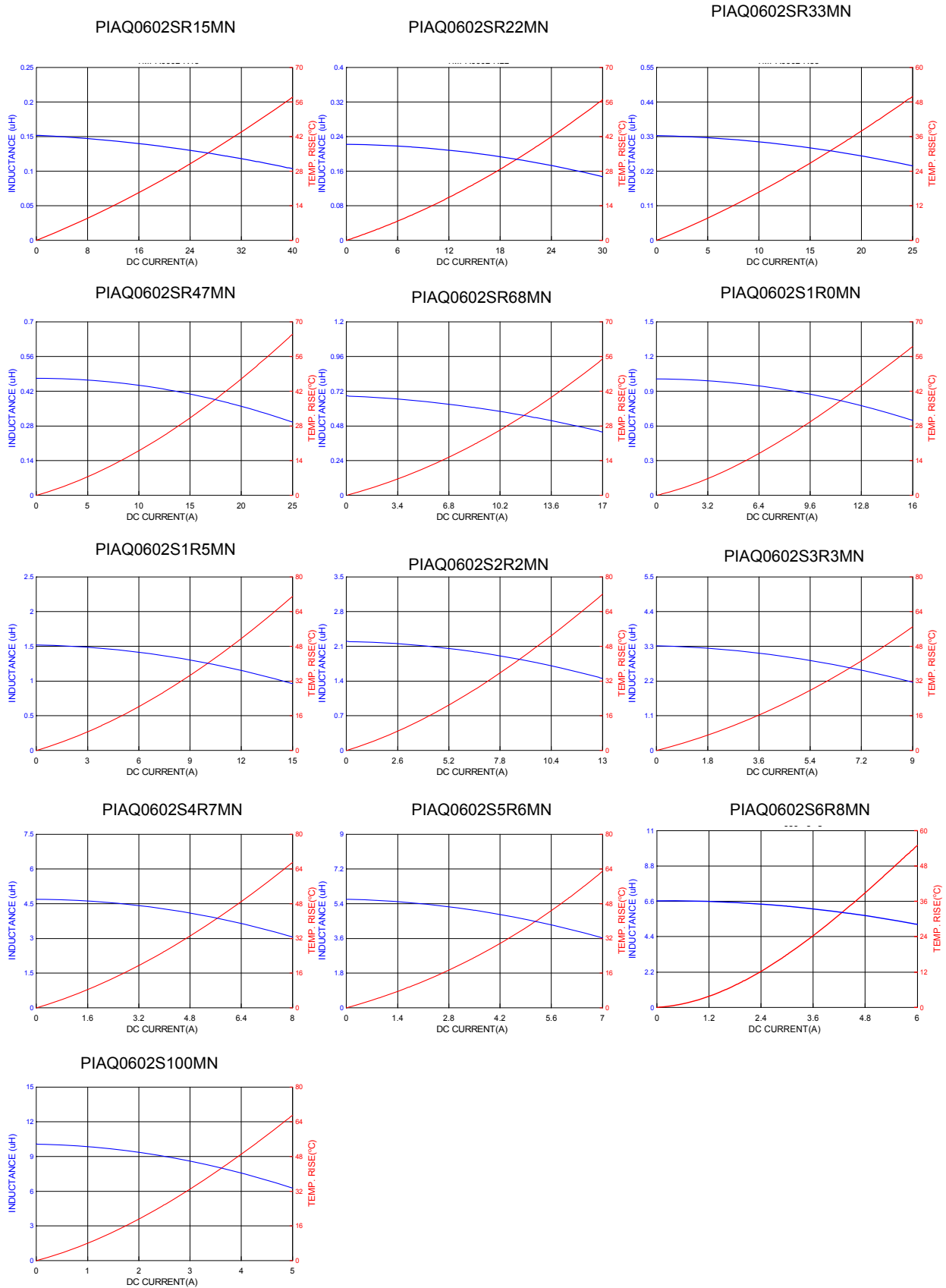
NOTE: Specifications subject to change without notice. Please check our website for latest information.

6. Electrical Characteristics:

| Part Number | Inductance L (uH) ±20% @ 0A | Test Frequency (Hz) | I _{rms} (A) Typ. | I _{rms} (A) Max. | I _{sat} (A) Typ. | I _{sat} (A) Max. | DCR (mΩ) Typ. | DCR (mΩ) Max. |
|----------------|--------------------------------------|---------------------------|---------------------------------|---------------------------------|---------------------------------|---------------------------------|---------------------|---------------------|
| PIAQ0602SR15MN | 0.15 | 1.0V/100K | 28.0 | 25.0 | 34.0 | 31.0 | 2.1 | 2.4 |
| PIAQ0602SR22MN | 0.22 | 1.0V/100K | 21.0 | 18.0 | 23.0 | 20.0 | 2.7 | 3.4 |
| PIAQ0602SR33MN | 0.33 | 1.0V/100K | 19.0 | 16.0 | 20.0 | 18.0 | 3.7 | 4.4 |
| PIAQ0602SR47MN | 0.47 | 1.0V/100K | 15.0 | 13.0 | 18.0 | 16.0 | 5.6 | 6.3 |
| PIAQ0602SR68MN | 0.68 | 1.0V/100K | 13.0 | 11.0 | 14.0 | 12.0 | 7.8 | 8.8 |
| PIAQ0602S1R0MN | 1.00 | 1.0V/100K | 11.0 | 9.5 | 12.5 | 10.5 | 13.5 | 15.5 |
| PIAQ0602S1R5MN | 1.50 | 1.0V/100K | 9.5 | 8.0 | 11.5 | 9.8 | 19.5 | 22.5 |
| PIAQ0602S2R2MN | 2.20 | 1.0V/100K | 8.0 | 7.0 | 10.0 | 9.0 | 25.6 | 29.5 |
| PIAQ0602S3R3MN | 3.30 | 1.0V/100K | 6.8 | 5.2 | 7.5 | 6.0 | 41.5 | 48.0 |
| PIAQ0602S4R7MN | 4.70 | 1.0V/100K | 5.5 | 4.5 | 6.0 | 5.0 | 48.0 | 57.0 |
| PIAQ0602S5R6MN | 5.60 | 1.0V/100K | 5.0 | 4.0 | 5.0 | 4.0 | 56.0 | 66.0 |
| PIAQ0602S6R8MN | 6.80 | 1.0V/100K | 4.5 | 3.8 | 4.3 | 3.6 | 60.0 | 70.0 |
| PIAQ0602S100MN | 10.0 | 1.0V/100K | 3.4 | 3.0 | 3.4 | 3.0 | 118 | 140 |

NOTE: Specifications subject to change without notice. Please check our website for latest information.

7. Characteristics Curves:



NOTE: Specifications subject to change without notice. Please check our website for latest information.

8. Soldering:

Mildly activated rosin fluxes are preferred. The minimum amount of solder can lead to damage from the stresses caused by the difference in coefficients of expansion between solder, chip and substrate. Our terminations are suitable for all-re-flow soldering systems. If hand soldering cannot be avoided, the preferred technique is the utilization of hot air.

8-1 Solder Re-flow

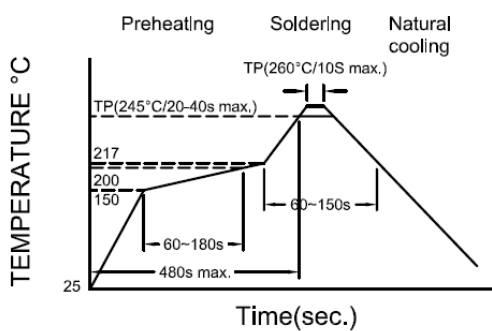
Recommended temperature profiles for re-flow soldering in Figure 1.

8-2 Soldering Iron (Figure 2)

Products attachment with soldering iron is discouraged due to the inherent process control limitations. In the event that a soldering iron must be employed the following precautions are recommended.

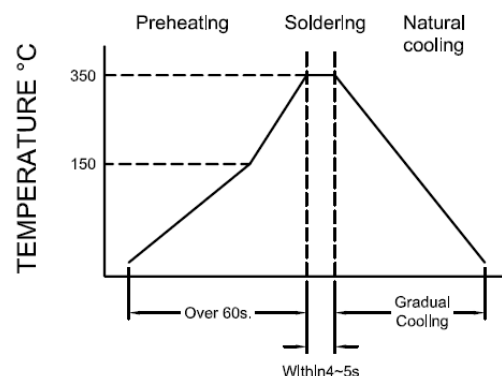
Note:

- a) Preheat circuit and products to 150°C.
- b) 355°C tip temperature (Max.)
- c) Never contact the ceramic with the iron tip
- d) 1.0mm tip diameter (Max.)
- e) Use a 20 watt soldering iron with tip diameter of 1.0mm
- f) Limit soldering time to 4~5 secs.



Reflow times: 3 times max

Fig.1



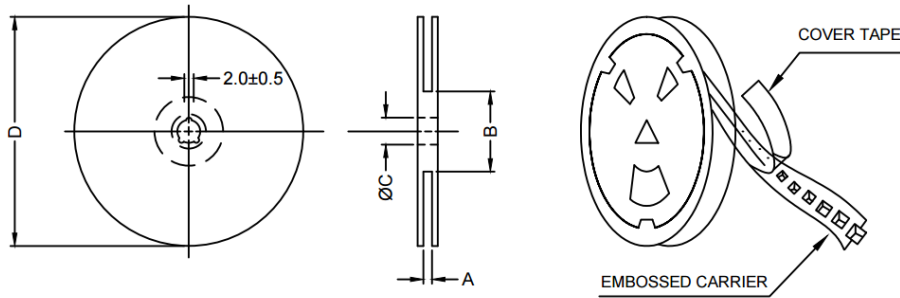
Iron Soldering times: 1 times max

Fig.2

NOTE: Specifications subject to change without notice. Please check our website for latest information.

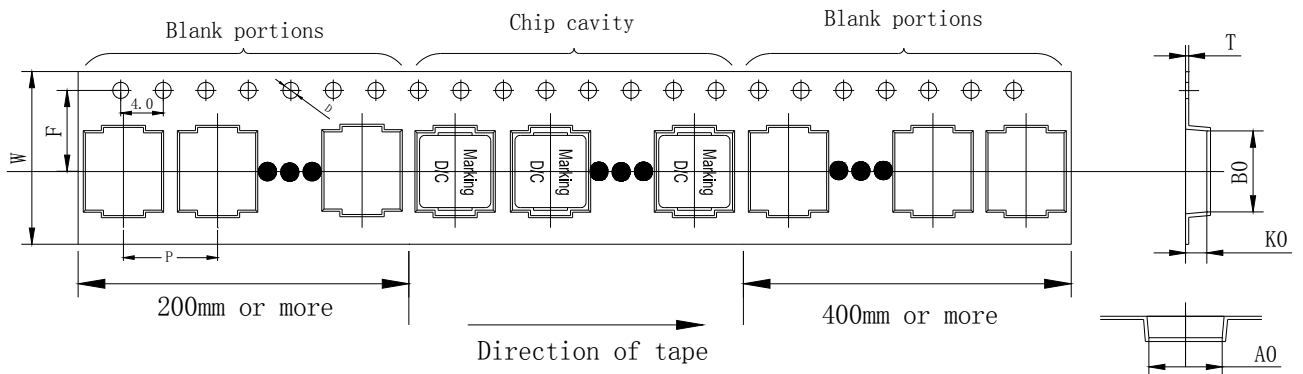
9. Packaging Information:

9-1 Reel Dimension



| Type | A(mm) | B(mm) | C(mm) | D(mm) |
|----------|-----------|-------|-------------|-------|
| 13"x16mm | 16.4+2/-0 | 100±2 | 13+0.5/-0.2 | 330 |

9-2 Tape Dimension



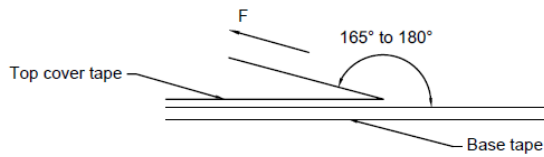
| Series | Size | Bo(mm) | Ao(mm) | Ko(mm) | P(mm) | W(mm) | F(mm) | T(mm) | D(mm) |
|--------|------|---------|---------|---------|----------|----------|---------|-----------|---------|
| PIAQ | 0602 | 7.7±0.1 | 7.0±0.1 | 2.3±0.1 | 12.0±0.1 | 16.0±0.3 | 7.5±0.1 | 0.35±0.05 | 1.5±0.1 |

9-3 Packaging Quantity

| | |
|-------------|-------|
| PIAQ | 0602 |
| Chip / Reel | 1500 |
| Inner box | 3000 |
| Carton | 12000 |

NOTE: Specifications subject to change without notice. Please check our website for latest information.

9-4 Tearing Off Force



The force for tearing off cover tape is 10 to 130 grams in the arrow direction under the following conditions.

| Room Temp. (°C) | Room Humidity (%) | Room atm (hPa) | Tearing Speed mm/min |
|-----------------|-------------------|----------------|----------------------|
| 5~35 | 45~85 | 860~1060 | 300 |

Application Notice:

1. Storage Conditions:

To maintain the solderability of terminal electrodes:

- a) Recommended products should be used within 12 months from the time of delivery.
- b) The packaging material should be kept where no chlorine or sulfur exists in the air.

2. Transportation:

- a) Products should be handled with care to avoid damage or contamination from perspiration and skin oils.
- b) Vacuum pick up is strongly recommended for individual components.
- c) Bulk handling should ensure that abrasion and mechanical shock are minimized.

NOTE: Specifications subject to change without notice. Please check our website for latest information.