

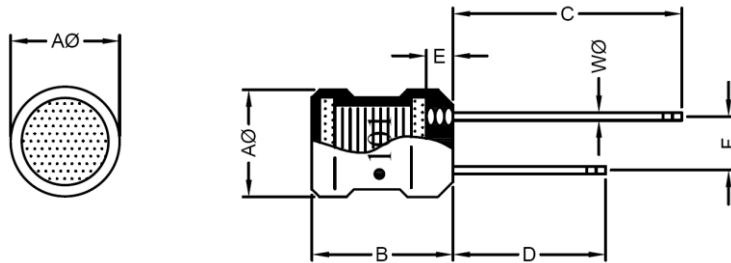
1. Part No. Expression:

R C B 0 8 1 2 1 0 1 M Z F

(a) (b) (c) (d)(f) (e)

- (a) Series Code
- (b) Dimension Code
- (c) Inductance Code
- (d) Tolerance Code
- (e) Standard Part
- (f) RoHS Compliant

2. Configuration & Dimensions:



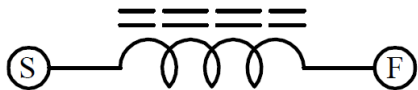
Marking :

" ● " : Start

Unit : mm

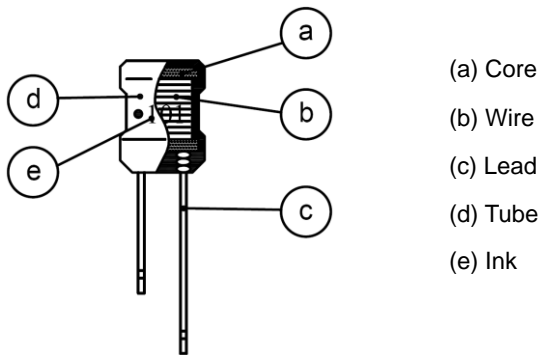
Aφ	B	C	D	E	F	Wφ
8.70±0.5	12.0±1.0	25.0±5.0	18.0±5.0	2.50 Max.	5.00±0.8	0.65±0.1

3. Schematic



NOTE: Specifications subject to change without notice. Please check our website for latest information.

4. Material List



5. General Specification

- (a) Operating Temp. : -40°C to +125°C
- (b) Storage Temp. : -40°C to +125°C
- (c) Temp. Rise. : 20°C Max. At rated current.

NOTE: Specifications subject to change without notice. Please check our website for latest information.

6. Electrical Characteristics

Part Number	Inductance (μ H)	Q Min.	Test Frequency (Hz)	SRF (MHz) Min.	DCR (Ω) Max.	IDC (A) Max.
RCB08123R3MZ	3.3	9	1.0V/7.96M	70.0	0.027	3.60
RCB08124R7MZ	4.7	9	1.0V/7.96M	50.0	0.033	3.20
RCB08126R8MZ	6.8	9	1.0V/7.96M	30.0	0.039	3.00
RCB0812100KZ	10.0	10	1.0V/2.52M	20.0	0.048	2.70
RCB0812120KZ	12.0	10	1.0V/2.52M	15.0	0.055	2.50
RCB0812150KZ	15.0	10	1.0V/2.52M	10.0	0.060	2.40
RCB0812180KZ	18.0	10	1.0V/2.52M	9.50	0.065	2.30
RCB0812220KZ	22.0	15	1.0V/2.52M	9.00	0.090	1.90
RCB0812270KZ	27.0	15	1.0V/2.52M	8.50	0.110	1.80
RCB0812330KZ	33.0	15	1.0V/2.52M	8.00	0.120	1.70
RCB0812390KZ	39.0	15	1.0V/2.52M	7.00	0.130	1.60
RCB0812470KZ	47.0	15	1.0V/2.52M	6.00	0.140	1.50
RCB0812560KZ	56.0	15	1.0V/2.52M	5.00	0.200	1.30
RCB0812680KZ	68.0	15	1.0V/2.52M	4.50	0.210	1.20
RCB0812820KZ	82.0	15	1.0V/2.52M	4.00	0.230	1.10
RCB0812101KZ	100	20	1.0V/0.796M	3.50	0.280	1.00
RCB0812121KZ	120	20	1.0V/0.796M	3.00	0.320	0.900
RCB0812151KZ	150	20	1.0V/0.796M	2.80	0.370	0.800
RCB0812181KZ	180	20	1.0V/0.796M	2.60	0.540	0.750
RCB0812221KZ	220	20	1.0V/0.796M	2.40	0.600	0.700
RCB0812271KZ	270	20	1.0V/0.796M	2.20	0.680	0.650
RCB0812331KZ	330	20	1.0V/0.796M	2.00	0.760	0.600
RCB0812391KZ	390	20	1.0V/0.796M	1.90	0.850	0.550
RCB0812471KZ	470	20	1.0V/0.796M	1.80	1.30	0.500
RCB0812561KZ	560	20	1.0V/0.796M	1.70	1.40	0.450
RCB0812681KZ	680	20	1.0V/0.796M	1.60	1.60	0.400
RCB0812821KZ	820	20	1.0V/0.796M	1.5	1.80	0.350
RCB0812102KZ	1000	20	1.0V/0.252M	1.3	2.10	0.300

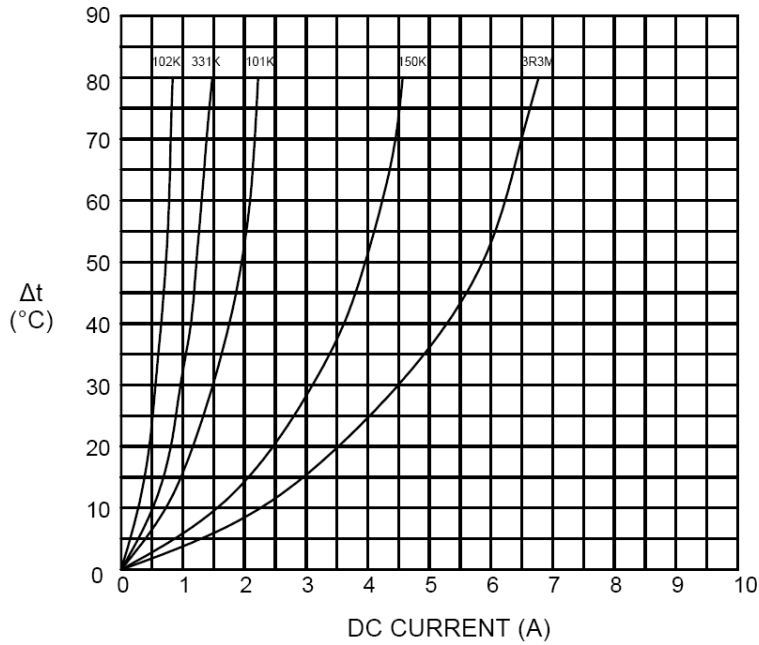
Note: Tolerance: M= \pm 20%,K=10%.

NOTE: Specifications subject to change without notice. Please check our website for latest information.

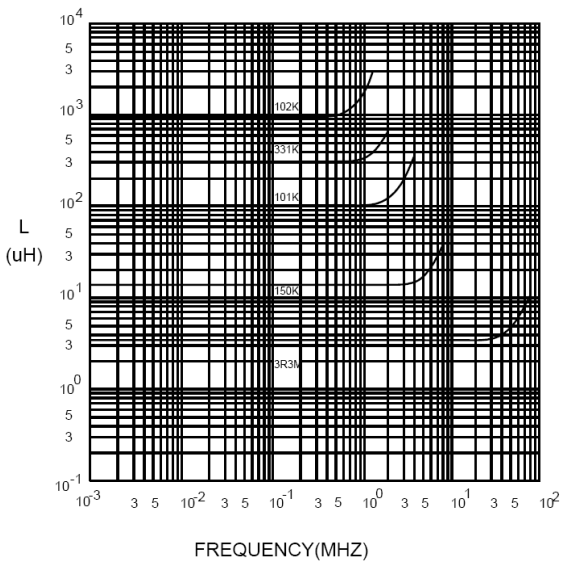


7. Characteristics Curve:

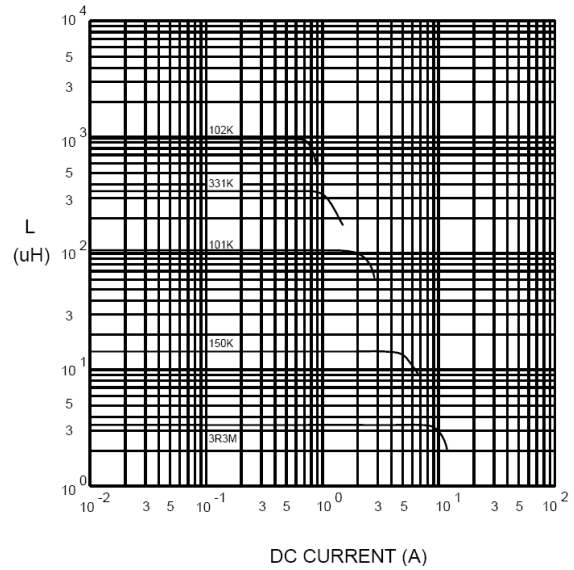
@ TEMP. RISE VS. DC SUPERPOSITION RESPONSE CURVE



@ INDUCTANCE VS. FREQUENCY RESPONSE CURVE



@ INDUCTANCE VS. DC SUPERPOSITION RESPONSE CURVE

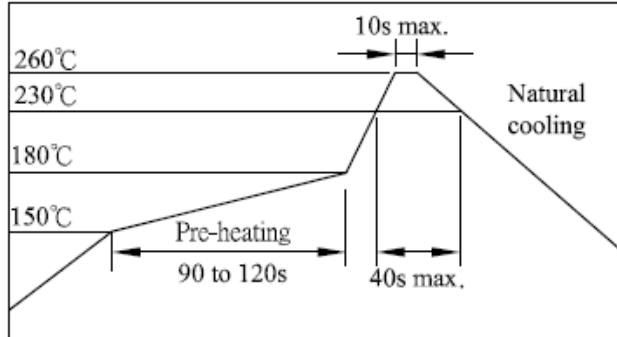


NOTE: Specifications subject to change without notice. Please check our website for latest information.



8. Soldering

RECOMMENDED SOLDERING CONDITIONS
REFLOW SOLDERINGS



9. Packaging Information

Size	RCB0812
Qty/PE Bag	200 PCS
Inner Box	1000 PCS
Carton	4000 PCS

NOTE: Specifications subject to change without notice. Please check our website for latest information.

