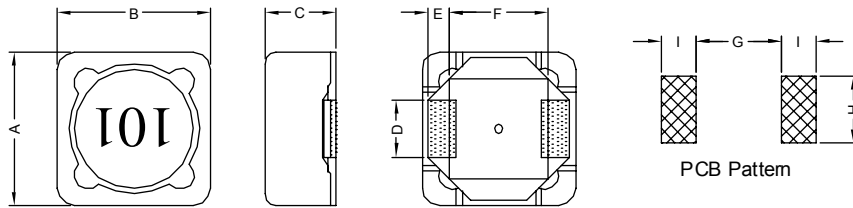


1. PART NO. EXPRESSION :

SDB1204101MZ F
 (a) (b) (c) (d)(e)(f)

- (a) Series code
- (b) Dimension code
- (c) Inductance code : 101 = 100.0uH
- (d) Tolerance code : M = ±20%
- (e) Z : Standard part
- (f) F : RoHS Compliant

2. CONFIGURATION & DIMENSIONS :



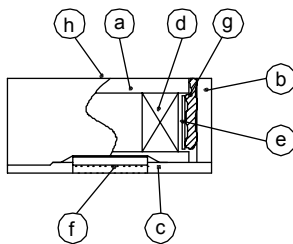
Unit: m/m

A	B	C	D	E	F	G	H	I
12.5±0.3	12.5±0.3	4.60 Max.	5.0±0.2	2.2±0.2	7.6±0.2	7.0 Ref.	5.4 Ref.	2.8 Ref.

3. SCHEMATIC :



4. MATERIALS :



- (a) DR Core
- (b) RI Core
- (c) Base
- (d) Wire
- (e) Tape
- (f) Terminal
- (g) Adhesive
- (h) Ink

5. GENERAL SPECIFICATION :

- a) Temp. rise : 40° C Max. at 1ms
- b) ΔL/L0A = 20% Max. at Isat
- c) Operating temp. : -40° C to +125° C
- d) Storage condition (component in its packaging)
 - i) Temperature : -10 to 40° C
 - ii) Humidity : 60%
- e) Resistance to solder heat : 260° C.10 secs



RoHS Compliant

NOTE : Specifications subject to change without notice. Please check our website for latest information.

25.11.2014



6. ELECTRICAL CHARACTERISTICS :

Part No.	Inductance (μH)	Test Frequency (Hz)	RDC ($\text{m}\Omega$) Max.	I _{rms} (A) Max.	I _{sat} (A) Max.
SDB12043R3MZF	3.3 \pm 20%	1V / 100K	15	6.10	6.50
SDB12044R7MZF	4.7 \pm 20%	1V / 100K	18	5.70	5.70
SDB12046R8MZF	6.8 \pm 20%	1V / 100K	23	5.00	4.90
SDB1204100MZF	10.0 \pm 20%	1V / 100K	28	4.60	4.50
SDB1204120MZF	12.0 \pm 20%	1V / 100K	38	3.90	4.00
SDB1204150MZF	15.0 \pm 20%	1V / 100K	52	3.30	3.20
SDB1204180MZF	18.0 \pm 20%	1V / 100K	60	3.00	3.10
SDB1204220MZF	22.0 \pm 20%	1V / 100K	70	2.80	2.90
SDB1204270MZF	27.0 \pm 20%	1V / 100K	80	2.60	2.80
SDB1204330MZF	33.0 \pm 20%	1V / 100K	97	2.40	2.70
SDB1204390MZF	39.0 \pm 20%	1V / 100K	132	2.30	2.10
SDB1204470MZF	47.0 \pm 20%	1V / 100K	150	2.00	1.90
SDB1204560MZF	56.0 \pm 20%	1V / 100K	190	1.80	1.80
SDB1204680MZF	68.0 \pm 20%	1V / 100K	220	1.70	1.50
SDB1204820MZF	82.0 \pm 20%	1V / 100K	260	1.60	1.30
SDB1204101MZF	100.0 \pm 20%	1V / 100K	308	1.40	1.20
SDB1204121MZF	120.0 \pm 20%	1V / 100K	380	1.30	1.10
SDB1204151MZF	150.0 \pm 20%	1V / 100K	520	1.10	0.95
SDB1204181MZF	180.0 \pm 20%	1V / 100K	600	0.95	0.85
SDB1204221MZF	220.0 \pm 20%	1V / 100K	700	0.90	0.80
SDB1204271MZF	270.0 \pm 20%	1V / 100K	860	0.90	0.60
SDB1204331MZF	330.0 \pm 20%	1V / 100K	980	0.80	0.50



RoHS Compliant

NOTE : Specifications subject to change without notice. Please check our website for latest information.

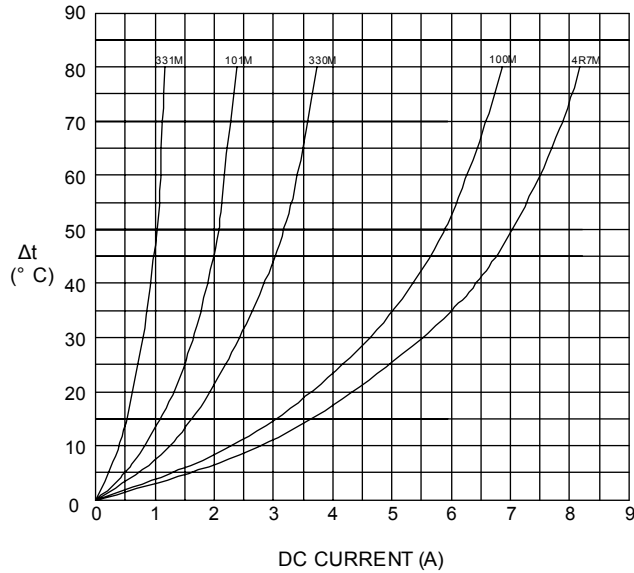
25.11.2014



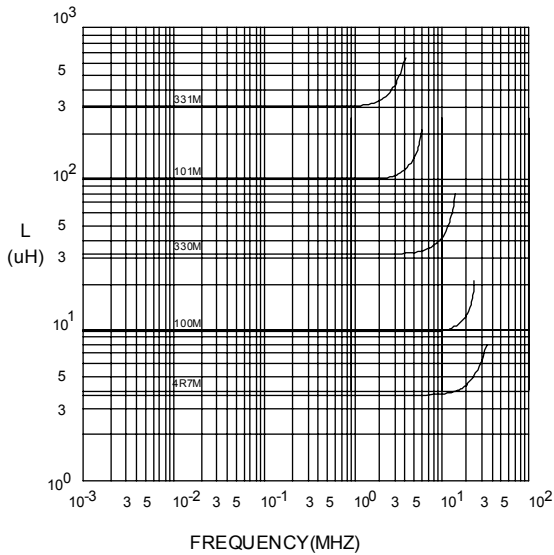
SUPERWORLD ELECTRONICS (S) PTE LTD

7. CHARACTERISTICS CURVES :

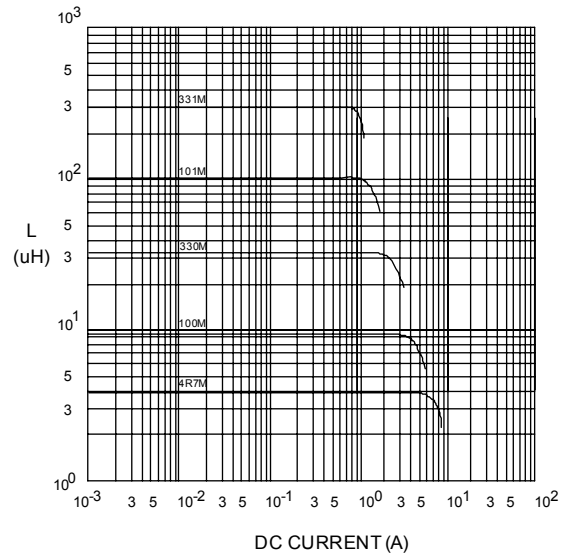
@ TEMP. RISE VS. DC SUPERPOSITION RESPONSE CURVE



@ INDUCTANCE VS. FREQUENCY RESPONSE CURVE



@ INDUCTANCE VS. DC SUPERPOSITION RESPONSE CURVE



NOTE : Specifications subject to change without notice. Please check our website for latest information.



RoHS Compliant

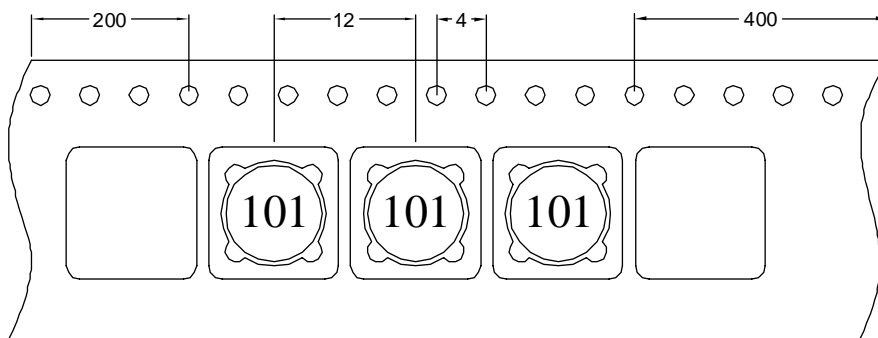
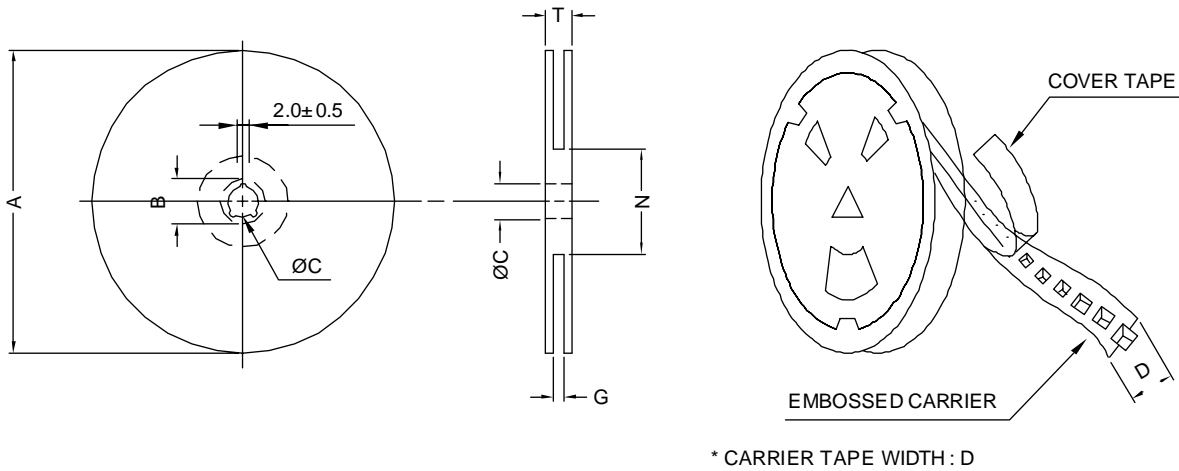
25.11.2014



SUPERWORLD ELECTRONICS (S) PTE LTD

8. PACKAGING INFORMATION :

(1) CONFIGURATION



(2) DIMENSIONS

Unit:m/m

STYLE	A	B	C	D	G	N	T
13-24	330	21±0.8	13±0.5	24	26 ⁺⁰	50 ⁻⁰	30.4

(3) QTY & G.W. PER PACKAGE

SERIES	INNER : REEL			OUTER : CARTON		
	QTY (PCS)	G.W. (gw)	STYLE	QTY (PCS)	G.W. (Kg)	SIZE (cm)
SDB1204	600	1900	13-24	2400	11.1	38 x 36.5 x 21



RoHS Compliant

NOTE : Specifications subject to change without notice. Please check our website for latest information.

25.11.2014