

### 1. PART NO. EXPRESSION :

SDC0602100MF  
 (a) (b) (c) (d)(e)

(a) Series code

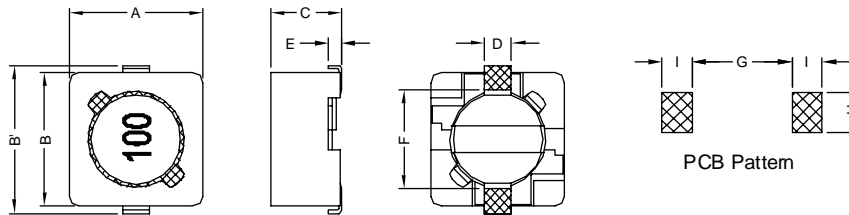
(b) Dimension code

(c) Inductance code : 100 = 10.0uH

(d) Tolerance code : M = ±20%

(e) F : RoHS Compliant

### 2. CONFIGURATION & DIMENSIONS :



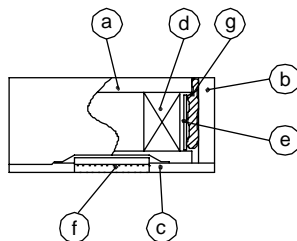
Unit:m/m

A	B	B'	C	D	E	F	G	H	I
6.20±0.30	5.90±0.30	6.60±0.30	3.00 Max.	1.50 Ref.	0.60 Ref.	4.60 Ref.	4.6 Ref.	1.9 Ref.	1.4 Ref.

### 3. SCHEMATIC :



### 4. MATERIALS :



(a) Core

(b) Core

(c) Base

(d) Wire

(e) Tape

(f) Terminal

(g) Adhesive

### 5. GENERAL SPECIFICATION :

- a) Temp. rise : 40° C Max.
- b) Rated current : Base on temp. rise & L/L0A = 25% Max.
- c) Operating temp. : -30° C to +105° C
- d) Storage condition (component in its packaging)
  - i) Temperature : -10 to 40° C
  - ii) Humidity : 60%
- e) Resistance to solder heat : 260° C.10 secs



**RoHS Compliant**

NOTE : Specifications subject to change without notice. Please check our website for latest information.



## 6. ELECTRICAL CHARACTERISTICS :

Part No.	Inductance ( $\mu$ H)	Test Frequency	RDC ( $\Omega$ ) Max.	IDC (A) Max.
SDC06022R9NF	2.9 <sup>+40%</sup> <sub>-20%</sub>	7.96MHz / 0.25V	0.068	1.94
SDC06024R0NF	4.0 <sup>+40%</sup> <sub>-20%</sub>	7.96MHz / 0.25V	0.080	1.63
SDC06025R5NF	5.5 <sup>+40%</sup> <sub>-20%</sub>	7.96MHz / 0.25V	0.096	1.40
SDC0602100MF	10 $\pm$ 20%	1KHz / 0.25V	0.15	1.10
SDC0602120MF	12 $\pm$ 20%	1KHz / 0.25V	0.20	1.00
SDC0602150MF	15 $\pm$ 20%	1KHz / 0.25V	0.23	0.90
SDC0602180MF	18 $\pm$ 20%	1KHz / 0.25V	0.27	0.80
SDC0602220MF	22 $\pm$ 20%	1KHz / 0.25V	0.34	0.74
SDC0602270MF	27 $\pm$ 20%	1KHz / 0.25V	0.38	0.66
SDC0602330MF	33 $\pm$ 20%	1KHz / 0.25V	0.45	0.59
SDC0602390MF	39 $\pm$ 20%	1KHz / 0.25V	0.49	0.54
SDC0602470MF	47 $\pm$ 20%	1KHz / 0.25V	0.69	0.50
SDC0602560MF	56 $\pm$ 20%	1KHz / 0.25V	0.78	0.46
SDC0602680MF	68 $\pm$ 20%	1KHz / 0.25V	1.07	0.42
SDC0602820MF	82 $\pm$ 20%	1KHz / 0.25V	1.21	0.38
SDC0602101MF	100 $\pm$ 20%	1KHz / 0.25V	1.39	0.34
SDC0602121MF	120 $\pm$ 20%	1KHz / 0.25V	1.90	0.31
SDC0602151MF	150 $\pm$ 20%	1KHz / 0.25V	2.18	0.28
SDC0602181MF	180 $\pm$ 20%	1KHz / 0.25V	2.77	0.26
SDC0602221MF	220 $\pm$ 20%	1KHz / 0.25V	3.12	0.23
SDC0602271MF	270 $\pm$ 20%	1KHz / 0.25V	4.38	0.22
SDC0602331MF	330 $\pm$ 20%	1KHz / 0.25V	4.94	0.19



RoHS Compliant

NOTE : Specifications subject to change without notice. Please check our website for latest information.

08.01.2015

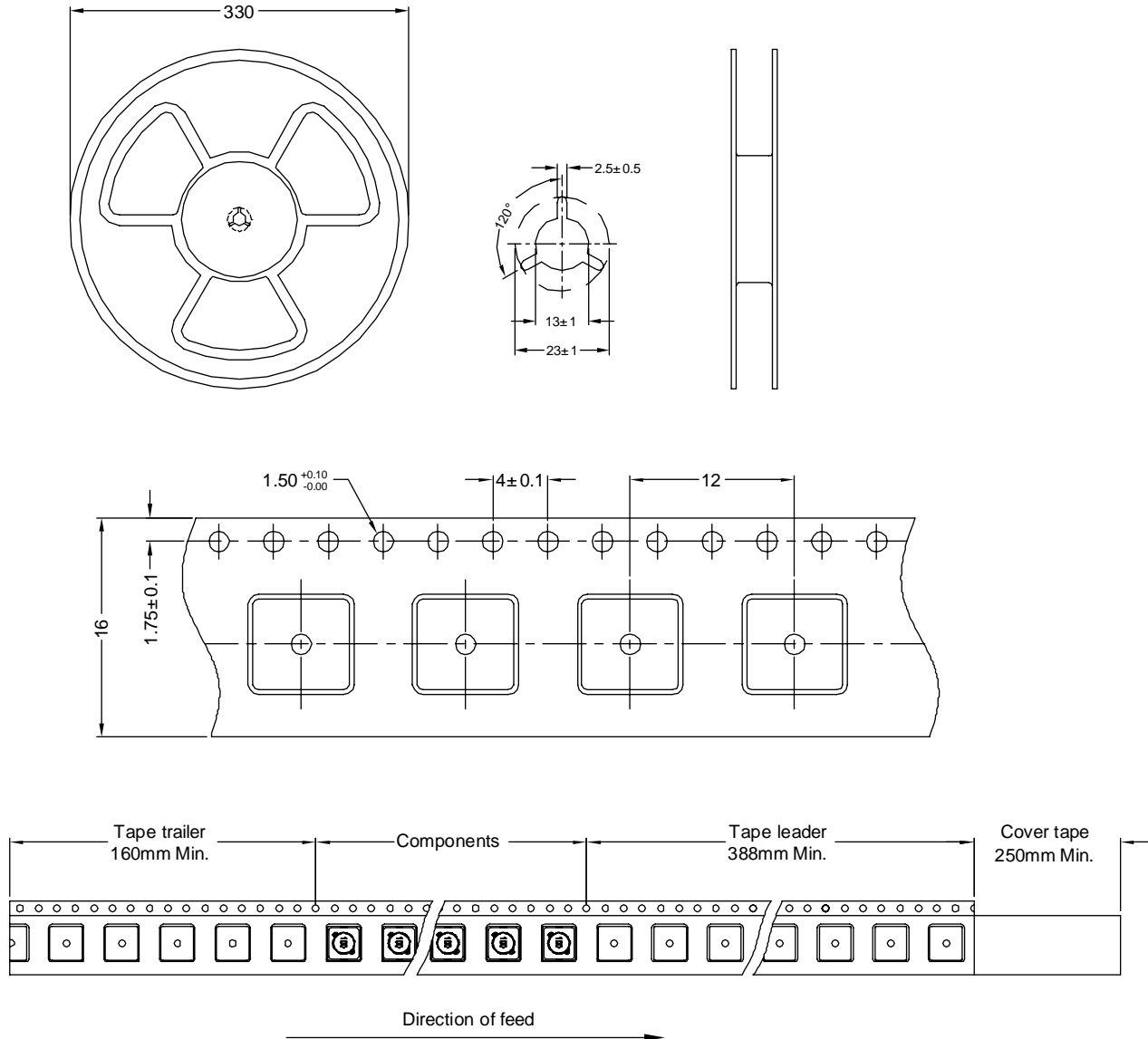


SUPERWORLD ELECTRONICS (S) PTE LTD

PG. 2

## 7. PACKAGING INFORMATION : ( Unit : mm )

### 7-1. Reel & Tape Dimension



### 7-2. Quantity & G.W. per package

SERIES	INNER : REEL			OUTER : CARTON		
	QTY (PCS)	G.W. (Kg)	STYLE	QTY (PCS)	G.W. (Kg)	SIZE (cm)
SDC0602	1500	0.65	13-16	24000	15	36 x 36 x 40



**RoHS Compliant**

NOTE : Specifications subject to change without notice. Please check our website for latest information.

08.01.2015