

1. Part No. Expression:

S D C 0 6 0 3 2 R 0 M Z F

(a) (b) (c) (d)(e)(f)

(a) Series Code

(b) Dimension Code

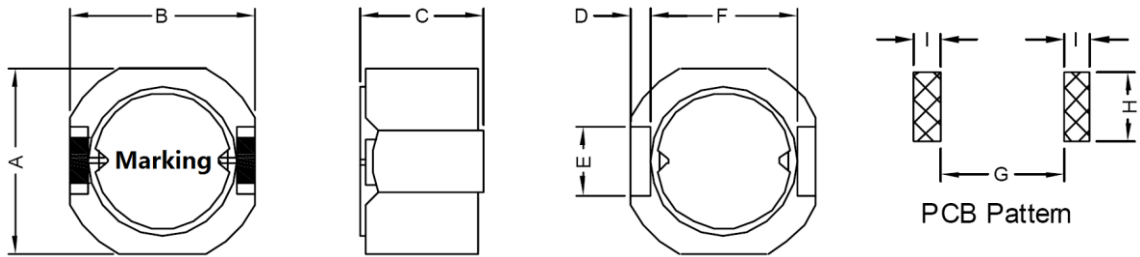
(c) Inductance Code

(d) Tolerance Code

(e) Standard Part

(f) RoHS Compliant

2. Configuration & Dimensions :



Note: Marking: Inductance Code.

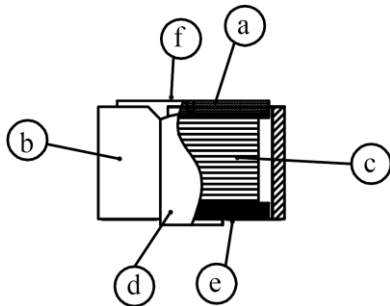
Unit: mm

A	B	C	D	E	F	G	H	I
6.2 Max.	6.3±0.3	3.5±0.1	0.6 Typ.	2.0 Typ.	4.8 Typ.	4.6 Ref.	2.6 Ref.	1.0 Ref.

3. Schematic:



4. Material List:



- a) Core
- b) Core
- c) Wire
- d) Terminal
- e) Adhesive
- f) Ink

NOTE: Specifications subject to change without notice. Please check our website for latest information.



5. General Specification:

- a) Operating Temp. : -40°C to +125°C.
- b) Storage Temp. : -40°C to +125°C.
- c) Temperature rise. : 40°C Max. At Irms.
- d) The inductance drop is 30% Max. At Isat.
- e) Resistance to solder heat: 260°C, 10secs.
- f) Storage Condition (component in packaging):
 - i) Temperature: -10°C to 40°C
 - ii) Humidity: 60%

6. Electrical Characteristics:

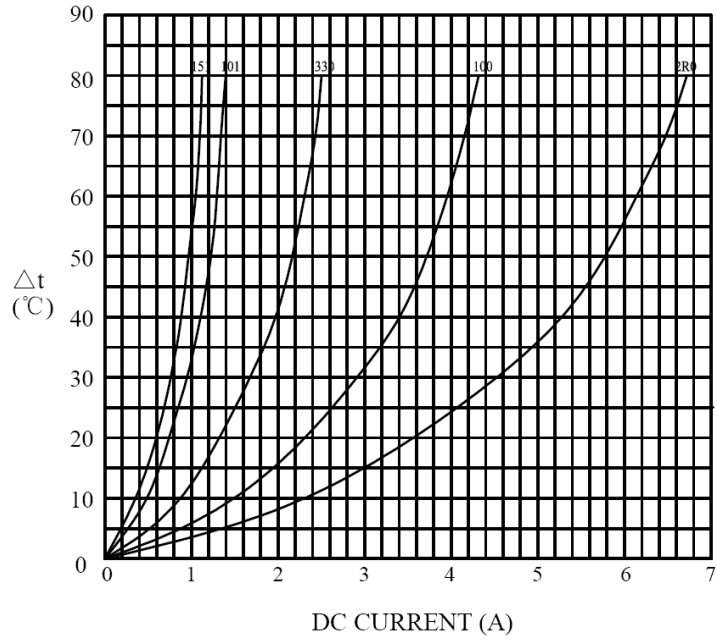
Part Number	Inductance (uH) ±20%	Test Frequency (Hz)	DCR (mΩ) Typ.	Isat (A) Max.	Irms (A) Max.
SDC06032R0MZF	2.0	1.0V/100K	19.1	2.997	3.30
SDC06032R7MZF	2.7	1.0V/100K	22.0	2.691	3.12
SDC06033R3MZF	3.3	1.0V/100K	25.7	2.573	2.81
SDC06034R7MZF	4.7	1.0V/100K	31.6	2.084	2.51
SDC06036R2MZF	6.2	1.0V/100K	35.0	1.835	2.41
SDC06038R2MZF	8.2	1.0V/100K	43.5	1.542	2.11
SDC0603100MZF	10.0	1.0V/100K	49.4	1.491	1.97
SDC0603120MZF	12.0	1.0V/100K	62.0	1.282	1.73
SDC0603150MZF	15.0	1.0V/100K	77.0	1.103	1.54
SDC0603180MZF	18.0	1.0V/100K	81.5	1.046	1.52
SDC0603220MZF	22.0	1.0V/100K	106	0.968	1.29
SDC0603270MZF	27.0	1.0V/100K	140	0.821	1.11
SDC0603330MZF	33.0	1.0V/100K	162	0.755	1.02
SDC0603390MZF	39.0	1.0V/100K	192	0.700	0.96
SDC0603470MZF	47.0	1.0V/100K	209	0.677	0.89
SDC0603560MZF	56.0	1.0V/100K	257	0.602	0.80
SDC0603680MZF	68.0	1.0V/100K	320	0.556	0.71
SDC0603820MZF	82.0	1.0V/100K	420	0.468	0.61
SDC0603101MZF	100	1.0V/100K	477	0.449	0.57
SDC0603151MZF	150	1.0V/100K	664	0.367	0.48

NOTE: Specifications subject to change without notice. Please check our website for latest information.

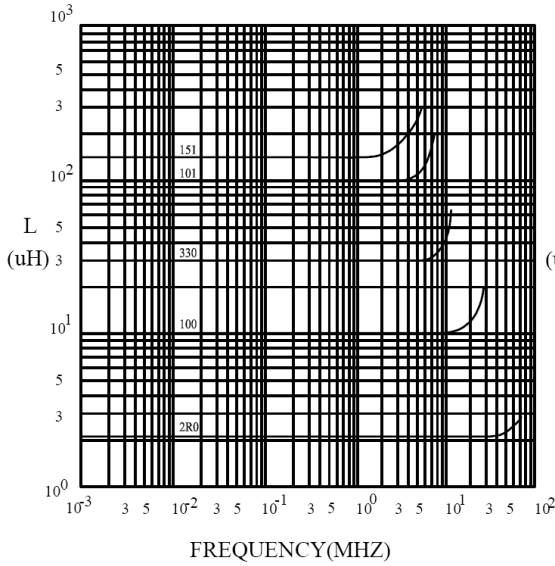


7. Characteristics Curves:

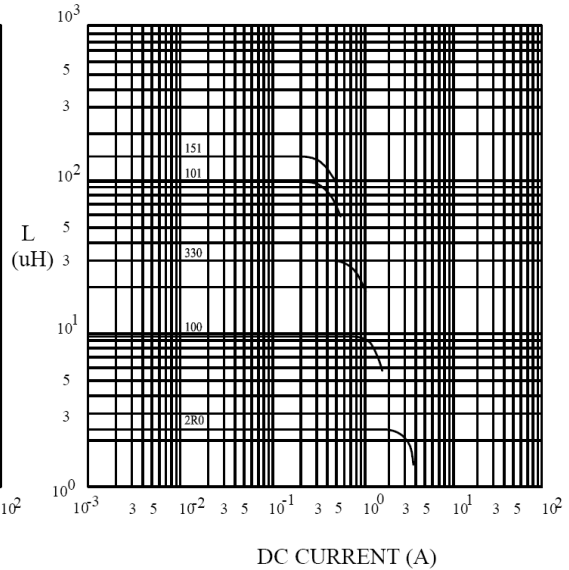
@ TEMP. RISE VS. DC SUPERPOSITION RESPONSE CURVE



@ INDUCTANCE VS. FREQUENCY RESPONSE CURVE



@ INDUCTANCE VS. DC SUPERPOSITION RESPONSE CURVE

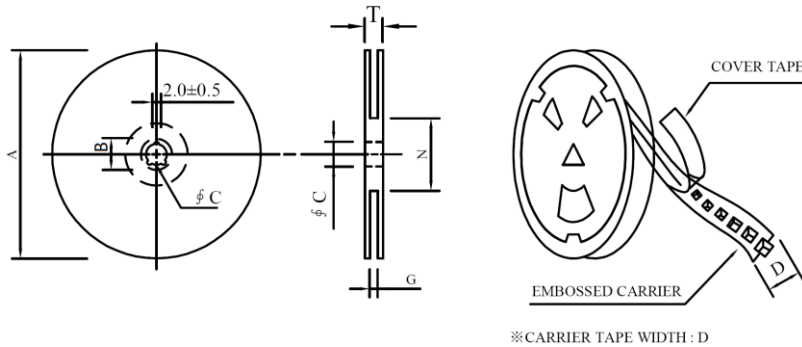


NOTE: Specifications subject to change without notice. Please check our website for latest information.



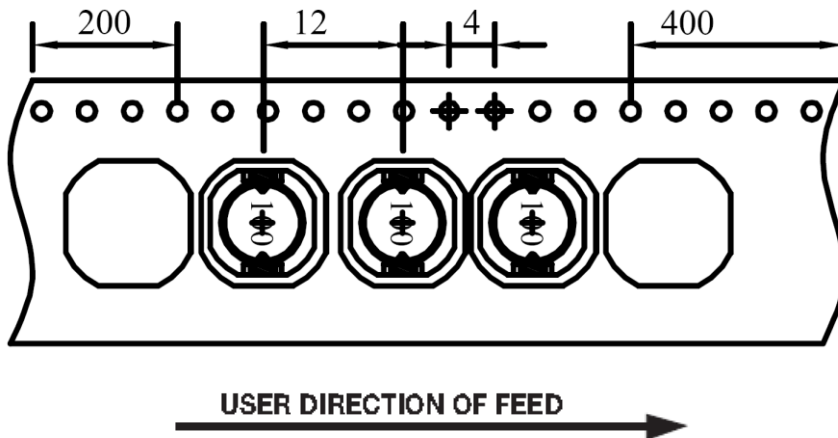
8. Packaging Information:

8-1 Reel Dimension



Type	A(mm)	B(mm)	C(mm)	D(mm)	G(mm)	N(mm)	T(mm)
13-16	330	21±0.8	13±0.5	16	18 Max.	50 Min.	22.4

8-2 Tape Dimension



8-3. Quantity & G.W. Per Package

Series	Inner: Reel			Outer: Carton		
	Qty (PCS)	G.W (gw)	Style	Qty (PCS)	G.W (kg)	Size (cm)
SDC0603	1000	800	13-16	6000	8.3	38 x 36.5 x 21

NOTE: Specifications subject to change without notice. Please check our website for latest information.