

### 1. PART NO. EXPRESSION :

SSB0705 101 MZF  
 (a) (b) (c) (d)(e)(f)

(a) Series code

(b) Dimension code

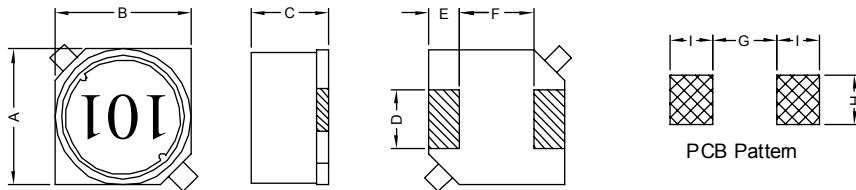
(c) Inductance code : 101 = 100uH

(d) Tolerance code : M = ±20%

(e) Z : Standard part

(f) F : RoHS Compliant

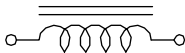
### 2. CONFIGURATION & DIMENSIONS :



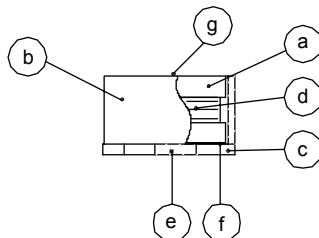
Unit:m/m

A	B	C	D	E	F	G	H	I
7.0±0.3	7.0±0.3	4.6±0.3	2.0±0.2	1.5±0.2	4.0±0.2	3.7 Ref.	2.2 Ref.	1.9 Ref.

### 3. SCHEMATIC :



### 4. MATERIALS :



(a) DR Core

(b) RI Core

(c) Base

(d) Wire

(e) Terminal

(f) Adhesive

(g) Ink

### 5. GENERAL SPECIFICATION :

- a) Temp. rise : 40° C Max.
- b) Rated current : Base on temp. rise &  $\Delta L/L0A = 10\%$  Max.
- c) Operating temp. : -40° C to +85° C
- d) Storage condition (component in its packaging)
  - i) Temperature : -10 to 40° C
  - ii) Humidity : 60%
- e) Resistance to solder heat : 260° C.10 secs



**RoHS Compliant**

NOTE : Specifications subject to change without notice. Please check our website for latest information.

22.12.2014

## 6. ELECTRICAL CHARACTERISTICS :

Part No.	Inductance ( $\mu$ H)	Test Frequency ( Hz )	RDC ( m $\Omega$ ) Max.	IDC ( A ) Max.
SSB07051R0MZF	1.0 $\pm$ 20%	1V/ 100K	20	3.00
SSB07051R5MZF	1.5 $\pm$ 20%	1V/ 100K	23	2.90
SSB07052R2MZF	2.2 $\pm$ 20%	1V/ 100K	26	2.70
SSB07053R3MZF	3.3 $\pm$ 20%	1V/ 100K	30	2.50
SSB07054R7MZF	4.7 $\pm$ 20%	1V/ 100K	36	2.00
SSB07056R8MZF	6.8 $\pm$ 20%	1V/ 100K	45	1.90
SSB0705100MZF	10.0 $\pm$ 20%	1V/ 100K	60	1.70
SSB0705120MZF	12.0 $\pm$ 20%	1V/ 100K	65	1.55
SSB0705150MZF	15.0 $\pm$ 20%	1V/ 100K	70	1.45
SSB0705180MZF	18.0 $\pm$ 20%	1V/ 100K	80	1.20
SSB0705220MZF	22.0 $\pm$ 20%	1V/ 100K	90	1.15
SSB0705270MZF	27.0 $\pm$ 20%	1V/ 100K	120	1.00
SSB0705330MZF	33.0 $\pm$ 20%	1V/ 100K	135	0.90
SSB0705390MZF	39.0 $\pm$ 20%	1V/ 100K	150	0.85
SSB0705470MZF	47.0 $\pm$ 20%	1V/ 100K	170	0.80
SSB0705560MZF	56.0 $\pm$ 20%	1V/ 100K	230	0.70
SSB0705680MZF	68.0 $\pm$ 20%	1V/ 100K	270	0.65
SSB0705820MZF	82.0 $\pm$ 20%	1V/ 100K	300	0.57
SSB0705101MZF	100.0 $\pm$ 20%	1V / 100K	360	0.50
SSB0705121MZF	120.0 $\pm$ 20%	1V / 100K	400	0.47
SSB0705151MZF	150.0 $\pm$ 20%	1V / 100K	530	0.40
SSB0705181MZF	180.0 $\pm$ 20%	1V / 100K	600	0.38
SSB0705221MZF	220.0 $\pm$ 20%	1V / 100K	800	0.35
SSB0705271MZF	270.0 $\pm$ 20%	1V / 100K	900	0.32
SSB0705331MZF	330.0 $\pm$ 20%	1V / 100K	1000	0.30
SSB0705391MZF	390.0 $\pm$ 20%	1V / 100K	1400	0.27
SSB0705471MZF	470.0 $\pm$ 20%	1V / 100K	1600	0.25
SSB0705561MZF	560.0 $\pm$ 20%	1V / 100K	1750	0.22
SSB0705681MZF	680.0 $\pm$ 20%	1V / 100K	2500	0.20
SSB0705821MZF	820.0 $\pm$ 20%	1V / 100K	2800	0.19
SSB0705102MZF	1000.0 $\pm$ 20%	1V / 100K	3200	0.18



RoHS Compliant

NOTE : Specifications subject to change without notice. Please check our website for latest information.

22.12.2014

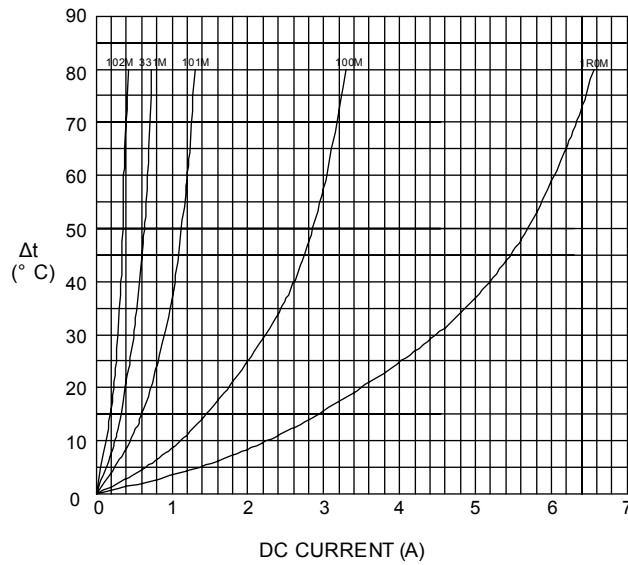


SUPERWORLD ELECTRONICS (S) PTE LTD

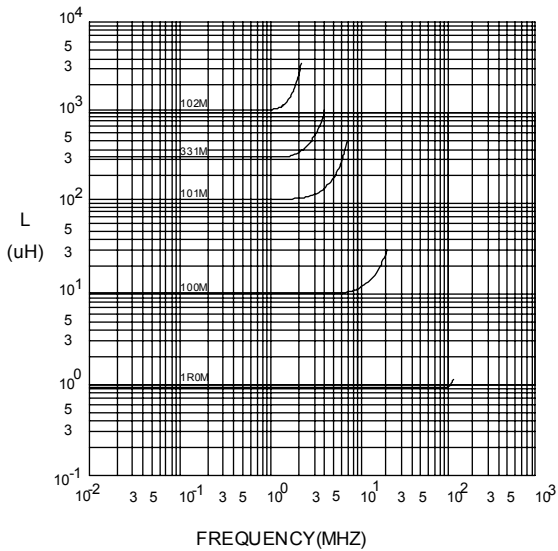
PG. 2

## 7. CHARACTERISTICS CURVES :

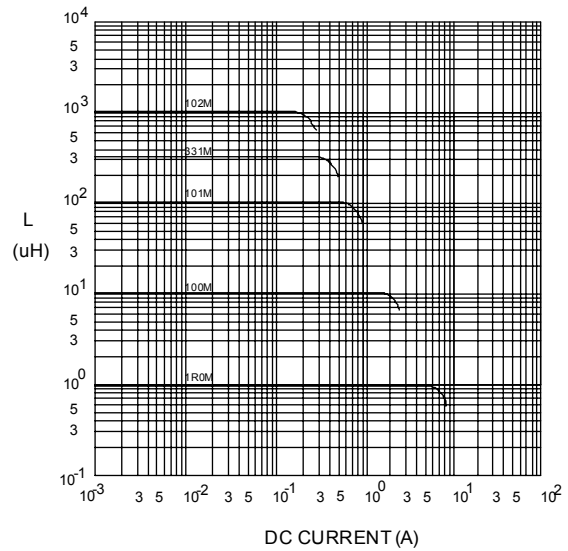
@ TEMP. RISE VS. DC SUPERPOSITION RESPONSE CURVE



@ INDUCTANCE VS. FREQUENCY RESPONSE CURVE



@ INDUCTANCE VS. DC SUPERPOSITION RESPONSE CURVE



NOTE : Specifications subject to change without notice. Please check our website for latest information.



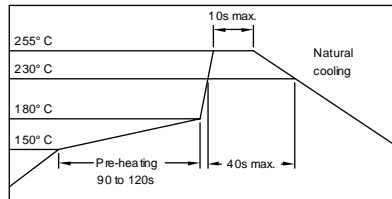
**RoHS Compliant**

22.12.2014



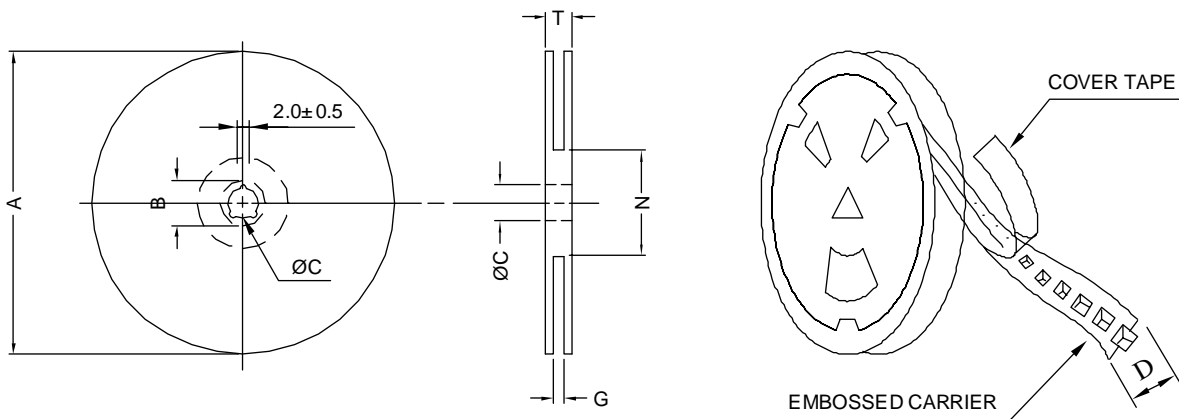
**SUPERWORLD ELECTRONICS (S) PTE LTD**

### RECOMMENDED SOLDERING CONDITIONS REFLOW SOLDERINGS

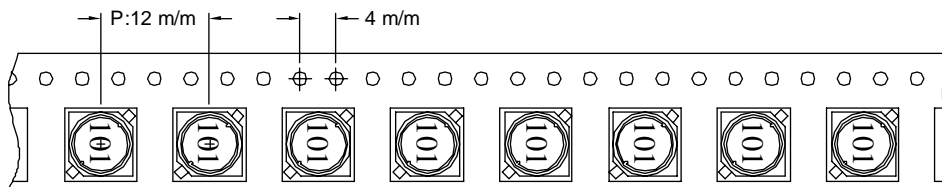


### 8. PACKAGING INFORMATION :

#### ( 1 ) CONFIGURATION



\* CARRIER TAPE WIDTH : D



#### ( 2 ) DIMENSIONS

Unit:m/m

STYLE	A	B	C	D	G	N	T
13-16	330	21±0.8	13	16	18 +0	50 -0	22.4

#### ( 3 ) QTY & G.W. PER PACKAGE

SERIES	INNER : REEL			OUTER : CARTON		
	QTY (PCS)	G.W. (gw)	STYLE	QTY (PCS)	G.W. (Kg)	SIZE (cm)
SSB0705	1000	717	13-16	6000	7.9	40 x 40 x 24



**RoHS Compliant**

NOTE : Specifications subject to change without notice. Please check our website for latest information.

22.12.2014



**SUPERWORLD ELECTRONICS (S) PTE LTD**