

1. PART NO. EXPRESSION :

S S B 1 2 0 5 4 R 7 M Z F
(a) (b) (c) (d)(e)(f)

(a) Series code

(b) Dimension code

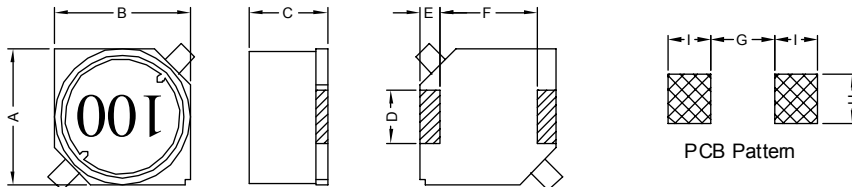
(c) Inductance code : 4R7 = 4.7uH

(d) Tolerance code : M = ±20%

(e) Z : Standard part

(f) F : RoHS Compliant

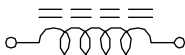
2. CONFIGURATION & DIMENSIONS :



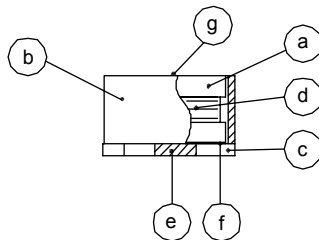
Unit: m/m

A	B	C	D	E	F	G	H	I
12.50±0.3	12.50±0.3	5.50±0.3	3.0±0.10	2.0±0.15	8.6±0.30	5.6 Ref.	3.2 Ref.	2.5 Ref.

3. SCHEMATIC :



4. MATERIALS :



(a) DR Core

(b) RI Core

(c) Base

(d) Wire

(e) Terminal

(f) Adhesive

(g) Ink

5. GENERAL SPECIFICATION :

a) Irms : Temp. rise 40° C Typ.

b) Isat : ΔL/L0A = 10% Typ.

c) Operating temp. : -40° C to +125° C

d) Storage condition (component in its packaging)

i) Temperature : -10 to 40° C

ii) Humidity : 60%

e) Resistance to solder heat : 260° C.10 secs



RoHS Compliant

NOTE : Specifications subject to change without notice. Please check our website for latest information.

22.12.2014



SUPERWORLD ELECTRONICS (S) PTE LTD

PG. 1

6. ELECTRICAL CHARACTERISTICS :

Part No.	Inductance (μ H)	Test Frequency (Hz)	RDC ($m\Omega$) Max.	Isat (A) Typ.	Irms (A) Typ.
SSB12054R7MZF	4.7 \pm 20%	1V / 100K	23	5.30	5.00
SSB12056R8MZF	6.8 \pm 20%	1V / 100K	25	5.00	4.00
SSB1205100MZF	10.0 \pm 20%	1V / 100K	30	4.50	3.50
SSB1205150MZF	15.0 \pm 20%	1V / 100K	38	4.00	2.80
SSB1205220MZF	22.0 \pm 20%	1V / 100K	46	3.50	2.30
SSB1205330MZF	33.0 \pm 20%	1V / 100K	60	3.20	1.90
SSB1205470MZF	47.0 \pm 20%	1V / 100K	85	2.50	1.60
SSB1205680MZF	68.0 \pm 20%	1V / 100K	110	2.20	1.30
SSB1205101MZF	100.0 \pm 20%	1V / 100K	150	1.80	1.10
SSB1205151MZF	150.0 \pm 20%	1V / 100K	240	1.40	0.90
SSB1205221MZF	220.0 \pm 20%	1V / 100K	350	1.20	0.72
SSB1205331MZF	330.0 \pm 20%	1V / 100K	500	1.00	0.60
SSB1205471MZF	470.0 \pm 20%	1V / 100K	710	0.88	0.50
SSB1205681MZF	680.0 \pm 20%	1V / 100K	1000	0.73	0.43
SSB1205102MZF	1000.0 \pm 20%	1V / 100K	1450	0.60	0.35
SSB1205152MZF	1500.0 \pm 20%	1V / 100K	2100	0.48	0.29



RoHS Compliant

NOTE : Specifications subject to change without notice. Please check our website for latest information.

22.12.2014

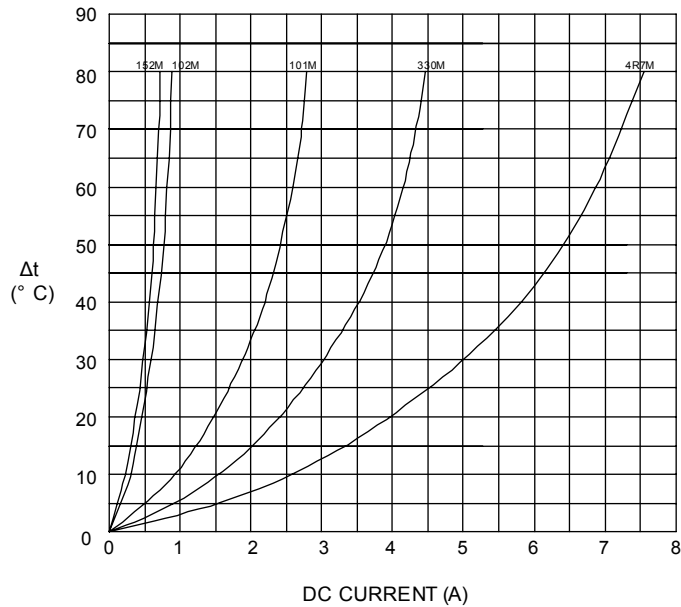


SUPERWORLD ELECTRONICS (S) PTE LTD

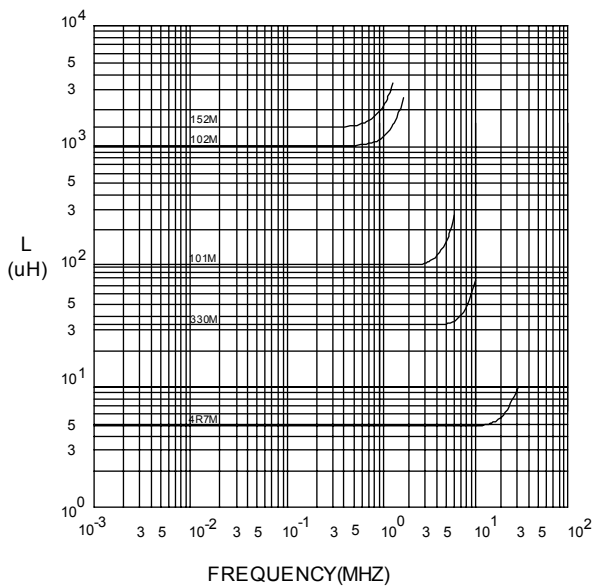
PG. 2

7. CHARACTERISTICS CURVES :

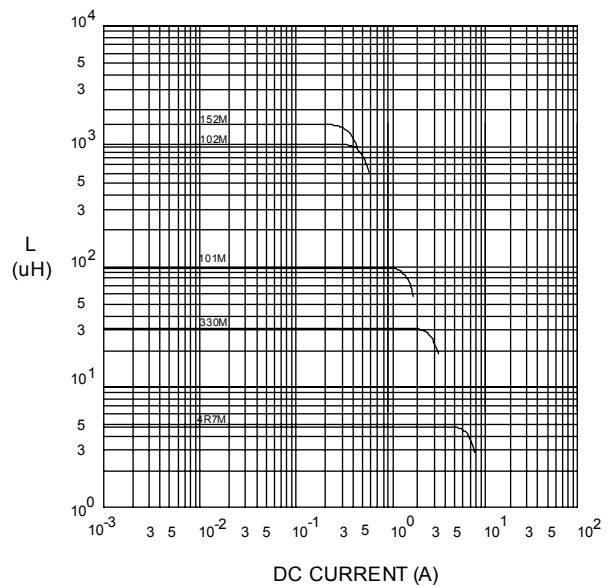
@ TEMP. RISE VS. DC SUPERPOSITION RESPONSE CURVE



@ INDUCTANCE VS. FREQUENCY RESPONSE CURVE



@ INDUCTANCE VS. DC SUPERPOSITION RESPONSE CURVE



NOTE : Specifications subject to change without notice. Please check our website for latest information.



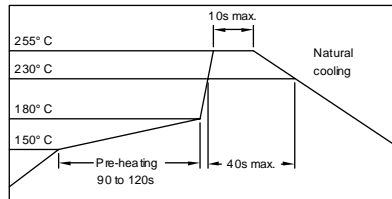
RoHS Compliant

22.12.2014



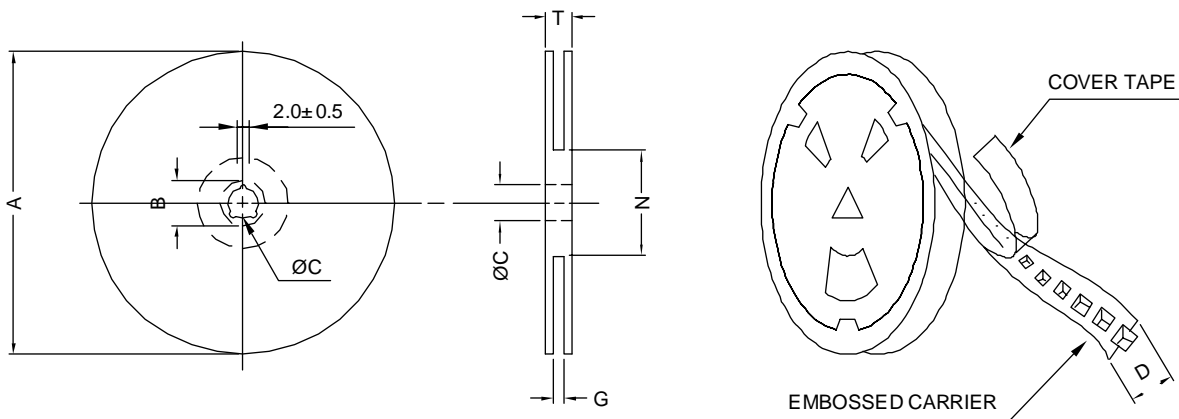
SUPERWORLD ELECTRONICS (S) PTE LTD

RECOMMENDED SOLDERING CONDITIONS REFLOW SOLDERINGS

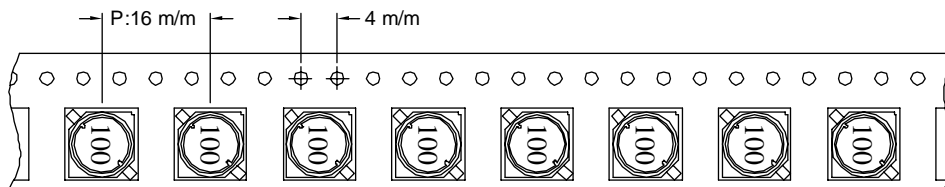


8. PACKAGING INFORMATION :

(1) CONFIGURATION



* CARRIER TAPE WIDTH : D



(2) DIMENSIONS

Unit:m/m

STYLE	A	B	C	D	G	N	T
13-24	330	21±0.8	13	24	26 ⁺⁰	50 ⁻⁰	30.4

(3) QTY & G.W. PER PACKAGE

SERIES	INNER : REEL			OUTER : CARTON		
	QTY (PCS)	G.W. (gw)	STYLE	QTY (PCS)	G.W. (Kg)	SIZE (cm)
SSB1205	600	1000	13-24	2400	7.5	40 x 40 x 24



RoHS Compliant

NOTE : Specifications subject to change without notice. Please check our website for latest information.

22.12.2014



SUPERWORLD ELECTRONICS (S) PTE LTD