

### 1. PART NO. EXPRESSION :

SSC 0403 1R2 Y Z F  
 (a) (b) (c) (d)(e)(f)

(a) Series code

(b) Dimension code

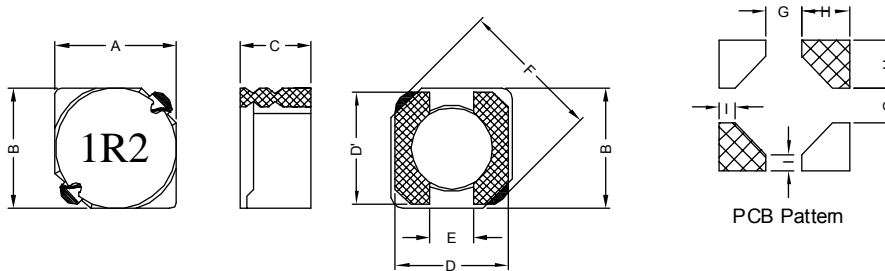
(c) Inductance code : 1R2 = 1.2uH

(d) Tolerance code : Y = ± 30%

(e) Z : Standard part

(f) F : RoHS Compliant

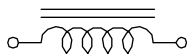
### 2. CONFIGURATION & DIMENSIONS :



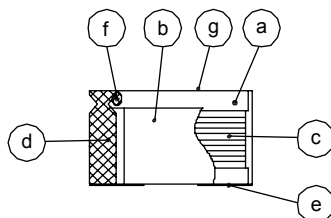
Unit : m/m

A	B	C	D	D'	E	F	G	H	I
4.70±0.3	4.70±0.3	3.00 Max.	4.50 Ref.	4.50 Ref.	1.50 Ref.	6.90 Max.	1.70 Ref.	1.80 Ref.	0.80 Ref.

### 3. SCHEMATIC :



### 4. MATERIALS :



- (a) DR Core
- (b) RI Core
- (c) Wire
- (d) Terminal
- (e) Adhesive
- (f) Adhesive
- (g) Ink

### 5. GENERAL SPECIFICATION :

- a) Temp. rise : 40° C Max. at Rated Current
- b) ΔL/L0A : 35% Max. at Rated Current
- c) Operating temp. : -40° C to +125° C
- d) Storage condition (component in its packaging)
  - i) Temperature : -10 to 40° C
  - ii) Humidity : 60%
- e) Resistance to solder heat : 260° C.10 secs



**RoHS Compliant**

NOTE : Specifications subject to change without notice. Please check our website for latest information.



## 6. ELECTRICAL CHARACTERISTICS :

Part No.	Inductance ( $\mu$ H)	Test Frequency ( Hz )	RDC ( m $\Omega$ ) Max.	IDC ( A ) Max.
SSC04031R2YZF	1.2 $\pm$ 30%	0.5V / 100K	23.6	2.56
SSC04031R8YZF	1.8 $\pm$ 30%	0.5V / 100K	27.5	2.20
SSC04032R2YZF	2.2 $\pm$ 30%	0.5V / 100K	31.3	2.04
SSC04032R7YZF	2.7 $\pm$ 30%	0.5V / 100K	43.3	1.60
SSC04033R3YZF	3.3 $\pm$ 30%	0.5V / 100K	49.2	1.57
SSC04033R9YZF	3.9 $\pm$ 30%	0.5V / 100K	64.8	1.44
SSC04034R7YZF	4.7 $\pm$ 30%	0.5V / 100K	72.0	1.32
SSC04035R6YZF	5.6 $\pm$ 30%	0.5V / 100K	100.9	1.17
SSC04036R8YZF	6.8 $\pm$ 30%	0.5V / 100K	108.9	1.12
SSC04038R2YZF	8.2 $\pm$ 30%	0.5V / 100K	117.5	1.04
SSC0403100YZF	10.0 $\pm$ 30%	0.5V / 100K	128.3	1.00
SSC0403120YZF	12.0 $\pm$ 30%	0.5V / 100K	131.6	0.84
SSC0403150YZF	15.0 $\pm$ 30%	0.5V / 100K	149.0	0.76
SSC0403180YZF	18.0 $\pm$ 30%	0.5V / 100K	166.0	0.72
SSC0403220YZF	22.0 $\pm$ 30%	0.5V / 100K	235.0	0.70
SSC0403270YZF	27.0 $\pm$ 30%	0.5V / 100K	261.0	0.58
SSC0403330YZF	33.0 $\pm$ 30%	0.5V / 100K	331.3	0.56
SSC0403390YZF	39.0 $\pm$ 30%	0.5V / 100K	383.7	0.50
SSC0403470YZF	47.0 $\pm$ 30%	0.5V / 100K	587.0	0.48
SSC0403560YZF	56.0 $\pm$ 30%	0.5V / 100K	624.5	0.41
SSC0403680YZF	68.0 $\pm$ 30%	0.5V / 100K	699.0	0.35
SSC0403820YZF	82.0 $\pm$ 30%	0.5V / 100K	914.8	0.32
SSC0403101YZF	100.0 $\pm$ 30%	0.5V / 100K	1020.0	0.29
SSC0403121YZF	120.0 $\pm$ 30%	0.5V / 100K	1270.0	0.27
SSC0403151YZF	150.0 $\pm$ 30%	0.5V / 100K	1350.0	0.24
SSC0403181YZF	180.0 $\pm$ 30%	0.5V / 100K	1540.0	0.22



**RoHS Compliant**

NOTE : Specifications subject to change without notice. Please check our website for latest information.

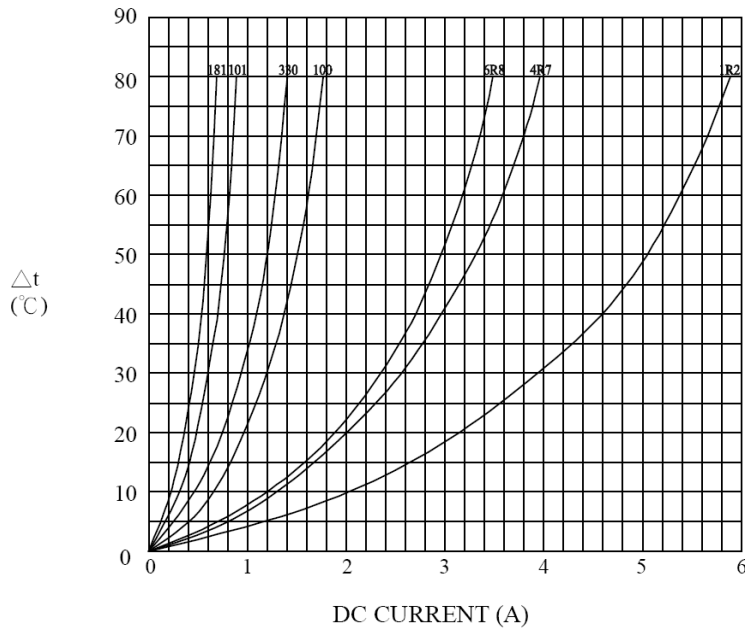
29.12.2014



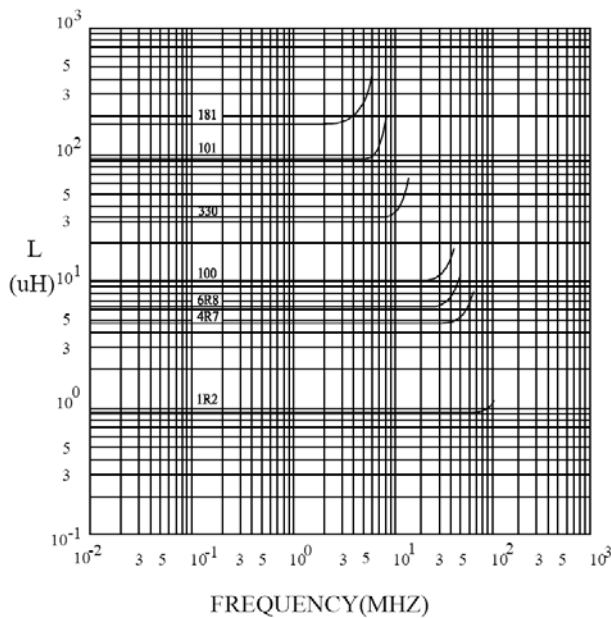
**SUPERWORLD ELECTRONICS (S) PTE LTD**

7. CHARACTERISTICS CURVES :

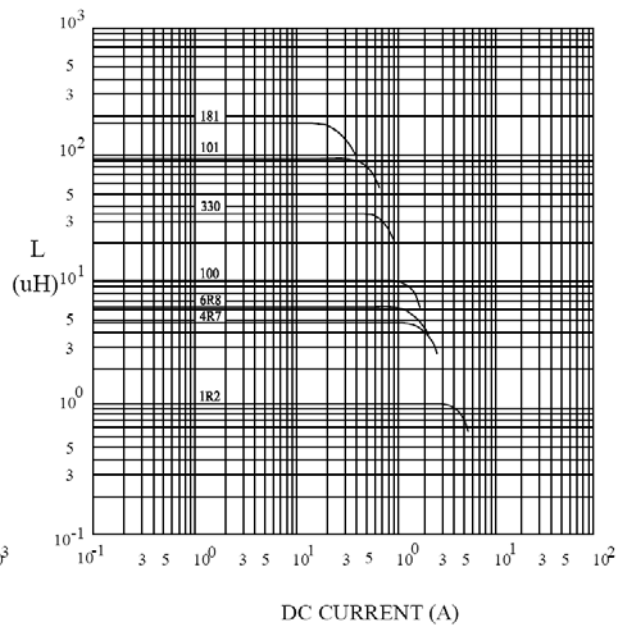
@ TEMP. RISE VS. DC SUPERPOSITION RESPONSE CURVE



@ INDUCTANCE VS. FREQUENCY RESPONSE CURVE



@ INDUCTANCE VS. DC SUPERPOSITION RESPONSE CURVE



RoHS Compliant

NOTE : Specifications subject to change without notice. Please check our website for latest information.

29.12.2014



SUPERWORLD ELECTRONICS (S) PTE LTD

## 8. PACKAGING INFORMATION :

### ( 1 ) CONFIGURATION

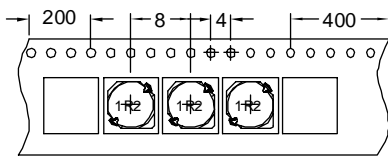
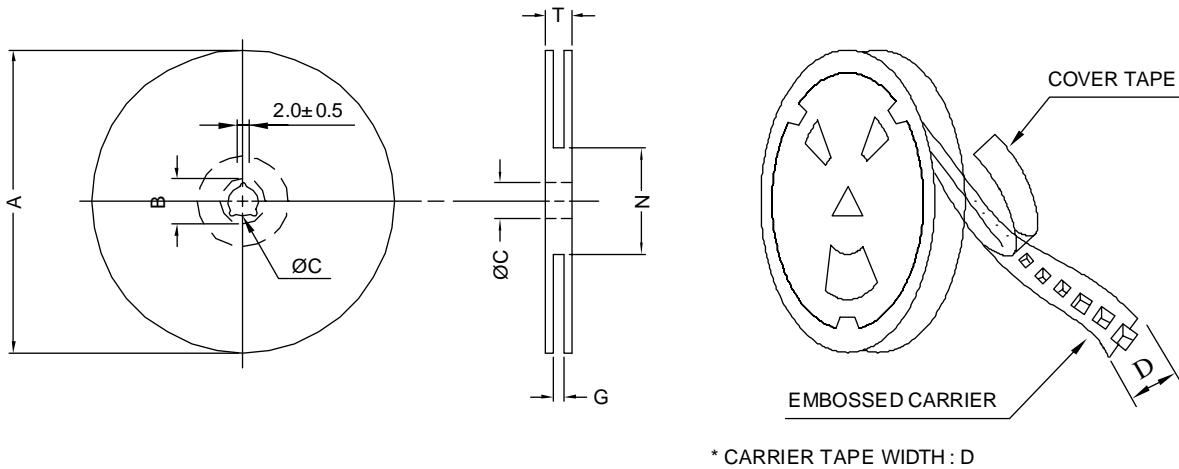


FIG : 1 (Leadfree Tape)

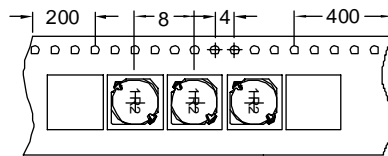


FIG : 2 (Leadfree Tape)

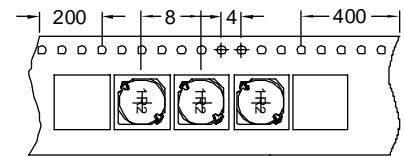


FIG : 3 (Transparent Carrier Tape)

### ( 2 ) DIMENSIONS

Unit:m/m

STYLE	A	B	C	D	G	N	T
13-16	330	21±0.8	13±0.5	16	18 <sup>+0</sup>	50 <sup>-0</sup>	22.4

### ( 3 ) QTY & G.W. PER PACKAGE

SERIES	INNER : REEL			OUTER : CARTON			PACKAGE CODE	FIG
	QTY (PCS)	G.W. (gw)	STYLE	QTY (PCS)	G.W. (Kg)	SIZE (cm)		
SSC0403	2000	2400	13-16	12000	17.9	38 x 36.5 x 21	F	1
SSC0403	2000	2400	13-16	12000	17.9	38 x 36.5 x 21	G	2
SSC0403	2000	2400	13-16	12000	17.9	38 x 36.5 x 21	H	3



**RoHS Compliant**

NOTE : Specifications subject to change without notice. Please check our website for latest information.

29.12.2014



**SUPERWORLD ELECTRONICS (S) PTE LTD**