

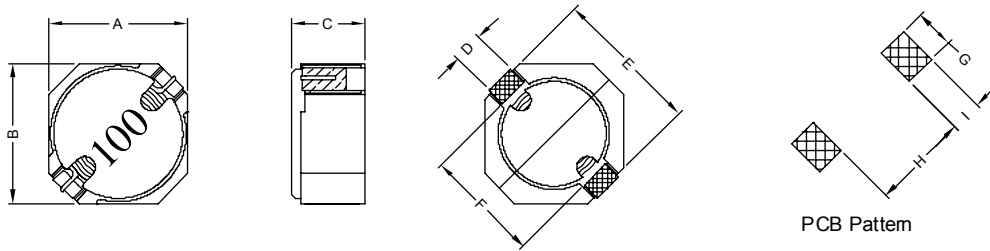
1. PART NO. EXPRESSION :

SSC 0804 100 Y Z F
 (a) (b) (c) (d)(e)(f)

- (a) Series code
- (b) Dimension code
- (c) Inductance code : 100 = 10.0uH

- (d) Tolerance code : Y = ±30%
- (e) Z : Standard part
- (f) F : RoHS Compliant

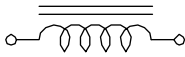
2. CONFIGURATION & DIMENSIONS :



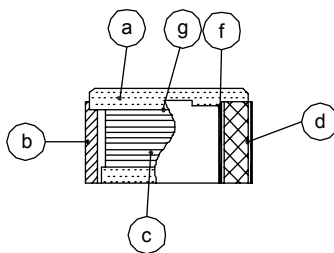
Unit: m/m

A	B	C	D	E	F	G	H	I
8.00± 0.30	8.00± 0.30	4.70± 0.30	1.80 Ref.	10.00 Ref.	6.50 Ref.	2.30 Ref.	6.10 Ref.	1.80 Ref.

3. SCHEMATIC :



4. MATERIALS :



- (a) DR Core
- (b) RI Core
- (c) Wire
- (d) Terminal
- (e) Adhesive
- (f) Adhesive
- (g) Ink

5. GENERAL SPECIFICATION :

- a) Temp. rise : 40° C Typ. at 1ms
- b) ΔL/L0A : 35% Max. at Isat
- c) Operating temp. : -40° C to +85° C
- d) Storage condition (component in its packaging)
 - i) Temperature : -10 to 40° C
 - ii) Humidity : 60%
- e) Resistance to solder heat : 260° C.10 secs



RoHS Compliant

NOTE : Specifications subject to change without notice. Please check our website for latest information.

29.12.2014

6. ELECTRICAL CHARACTERISTICS :

Part No.	Inductance (μ H)	Test Frequency (Hz)	RDC (m Ω) Max.	Isat (A)	Irms (A)	SRF (MHz) Typ.
SSC08041R0YZF	1.0 \pm 30%	1V / 100K	9.5	11.0	8.0	100.0
SSC08041R8YZF	1.8 \pm 30%	1V / 100K	11.0	8.0	7.5	80.0
SSC08042R2YZF	2.2 \pm 30%	1V / 100K	13.0	7.0	6.5	50.0
SSC08043R3YZF	3.3 \pm 30%	1V / 100K	15.0	6.5	6.0	40.0
SSC08044R7YZF	4.7 \pm 30%	1V / 100K	18.0	5.5	5.5	35.0
SSC08046R8YZF	6.8 \pm 30%	1V / 100K	22.0	4.4	5.0	25.0
SSC0804100YZF	10.0 \pm 30%	1V / 100K	35.0	3.8	4.0	22.0
SSC0804150YZF	15.0 \pm 30%	1V / 100K	45.0	3.0	3.0	18.0
SSC0804220YZF	22.0 \pm 30%	1V / 100K	65.0	2.4	2.8	15.0
SSC0804330YZF	33.0 \pm 30%	1V / 100K	90.0	2.0	2.2	10.0
SSC0804470YZF	47.0 \pm 30%	1V / 100K	120.0	1.8	1.8	9.0
SSC0804680YZF	68.0 \pm 30%	1V / 100K	170.0	1.4	1.5	7.0
SSC0804101YZF	100.0 \pm 30%	1V / 100K	270.0	1.2	1.2	6.5



RoHS Compliant

NOTE : Specifications subject to change without notice. Please check our website for latest information.

29.12.2014

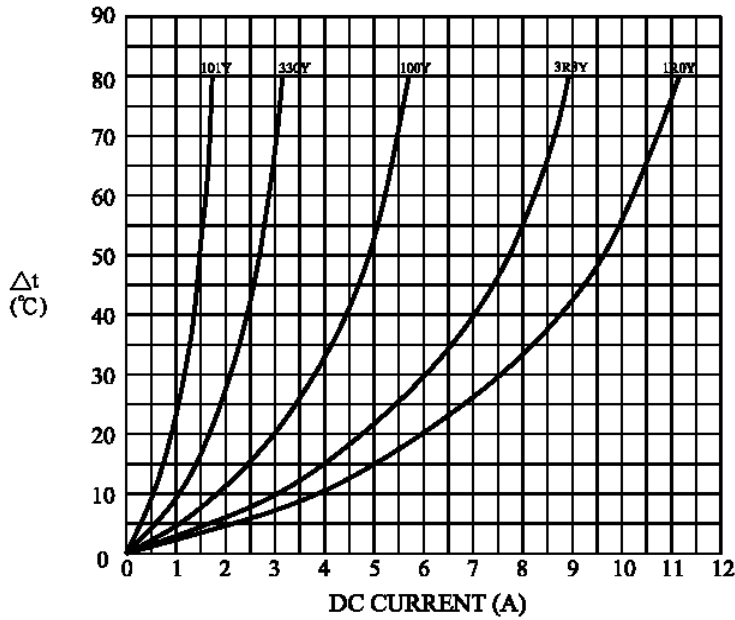


SUPERWORLD ELECTRONICS (S) PTE LTD

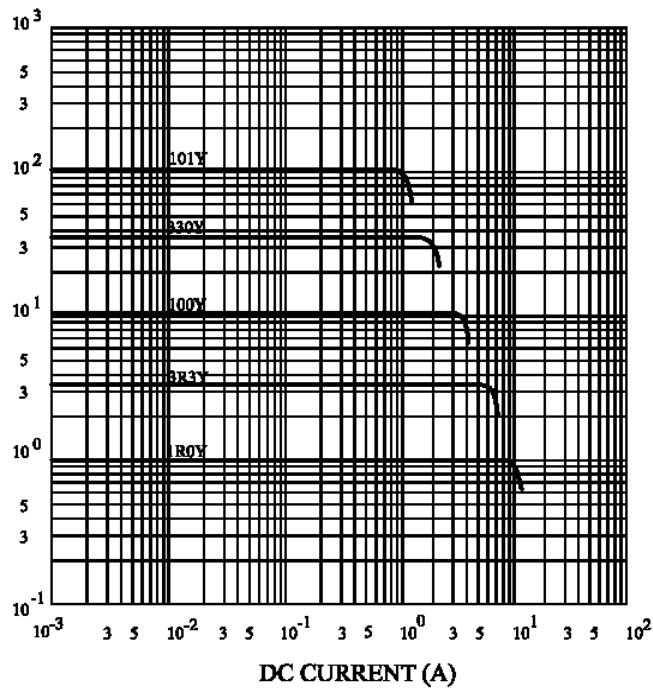
PG. 2

7. CHARACTERISTICS CURVES :

@ TEMP. RISE VS. DC SUPERPOSITION RESPONSE CURVE



@ INDUCTANCE VS. DC SUPERPOSITION RESPONSE CURVE



NOTE : Specifications subject to change without notice. Please check our website for latest information.

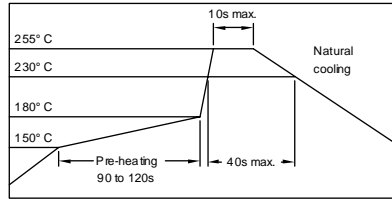


RoHS Compliant

29.12.2014

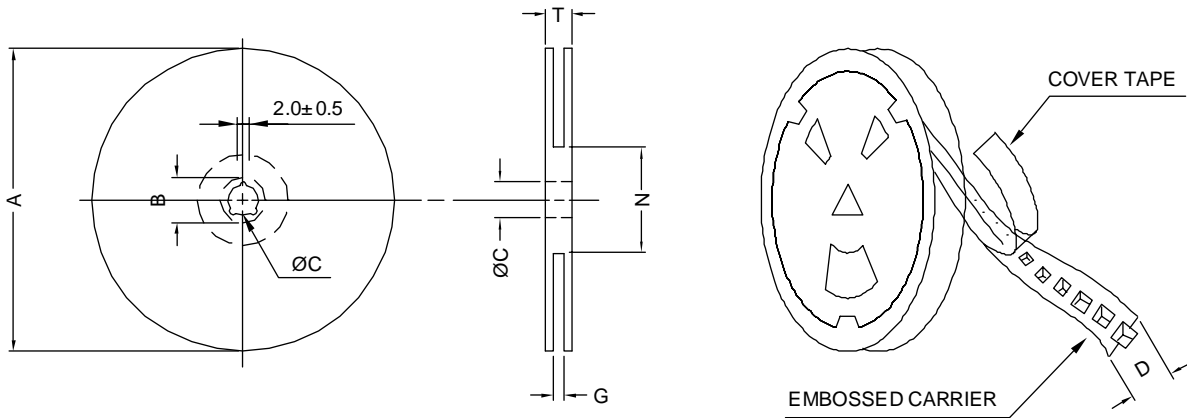


RECOMMENDED SOLDERING CONDITIONS REFLOW SOLDERINGS

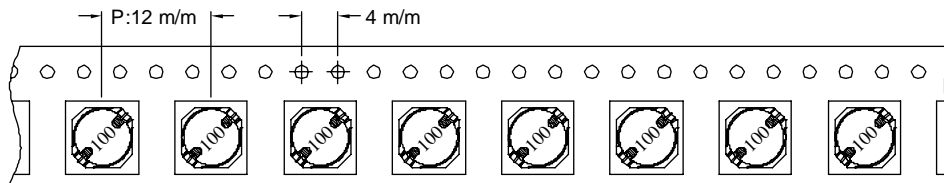


8. PACKAGING INFORMATION :

(1) CONFIGURATION



* CARRIER TAPE WIDTH : D



(2) DIMENSIONS

Unit:m/m

STYLE	A	B	C	D	G	N	T
13-16	330	21±0.8	13	16	18 +0	50 -0	22.4

(3) QTY & G.W. PER PACKAGE

SERIES	INNER : REEL			OUTER : CARTON		
	QTY (PCS)	G.W. (gw)	STYLE	QTY (PCS)	G.W. (Kg)	SIZE (cm)
SSC0804	1000	1200	13-16	4000	8.3	40 x 40 x 24



RoHS Compliant

NOTE : Specifications subject to change without notice. Please check our website for latest information.

29.12.2014