

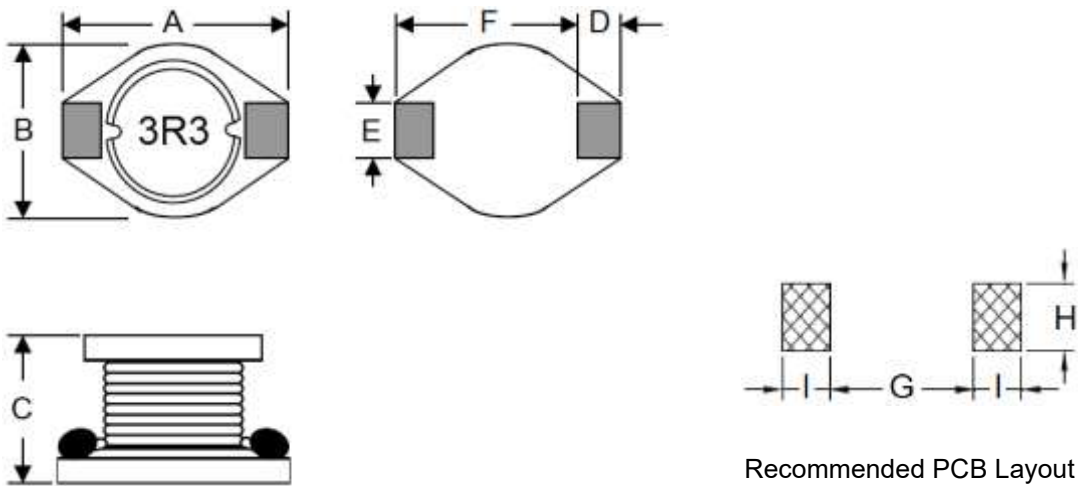
## 1. Part No. Expression

**P D B 0 8 0 5 3 R 3 M Z F**

(a) (b) (c) (d) (e) (f)

- (a) Series Code
- (b) Dimension Code
- (c) Inductance Code
- (d) Tolerance Code
- (e) Special Code
- (f) Packaging Code

## 2. Configuration & Dimensions (Unit: mm)



Recommended PCB Layout

- Note:
1. The above PCB layout reference only.
  2. Marking: Inductance Code

A	B	C	D	E
10.5±0.2	8.0±0.3	5.0±0.3	2.1±0.2	2.0±0.2
F	G	H	I	-
6.0±0.3	5.7 Ref	2.2 Ref	2.4 Ref	-

NOTE: Specifications subject to change without notice. Please check our website for latest information.

## 3. Material List

- (a) Core
- (b) Wire (155°C)
- (c) Base
- (d) Solder
- (e) Epoxy
- (f) Ink

## 4. General Specifications

- (a) Operating Temp.: - 40°C to + 125°C (coil contain heat)
- (b) Storage Temp.: - 40°C to + 125°C (on board)
- (c) All test data referenced to 25°C ambient.
- (d) Heat Rated Current (Irms) will cause the coil temperature rise  $\Delta T$  of 40°C Max.
- (e) Saturation Current (Isat) will cause inductance L0 to drop 10% Max.
- (f) Rated Current: The lower value of Isat and Irms.
- (g) Storage Condition (Component in its packaging)
  - i) Temperature: Less than 40°C
  - ii) Humidity: Less than 70% RH

NOTE: Specifications subject to change without notice. Please check our website for latest information.

## 5. Electrical Characteristics

Part Number	Inductance (μH) @0A	Test Frequency	Q Ref	DCR (mΩ) Max	IDC (A)	SRF (MHz) Typ
PDB08053R3□ZF	3.3	1V/100KHz	40	30	3.70	50
PDB08054R7□ZF	4.7	1V/100KHz	30	35	3.30	40
PDB08056R8□ZF	6.8	1V/100KHz	30	50	2.70	30
PDB0805100□ZF	10.0	1V/100KHz	25	60	2.30	23
PDB0805150□ZF	15.0	1V/100KHz	25	80	2.10	20
PDB0805220□ZF	22.0	1V/100KHz	25	130	1.60	16
PDB0805330□ZF	33.0	1V/100KHz	25	180	1.30	12
PDB0805470□ZF	47.0	1V/100KHz	45	260	1.10	11
PDB0805680□ZF	68.0	1V/100KHz	35	350	1.10	9
PDB0805101□ZF	100.0	1V/100KHz	55	580	0.70	7
PDB0805151□ZF	150.0	1V/100KHz	50	750	0.60	5
PDB0805221□ZF	220.0	1V/100KHz	55	1050	0.50	4
PDB0805331□ZF	330.0	1V/100KHz	50	1600	0.45	3.5

Note:

Tolerance Code: M=±20%, Y=±30%

NOTE: Specifications subject to change without notice. Please check our website for latest information.

6. Soldering Specification

Mildly activated rosin fluxes are preferred. Our terminations are suitable for re-flow soldering systems. If hand soldering cannot be avoided, the preferred technique is the utilization of hot air soldering tools.

6-1. IR Soldering Reflow

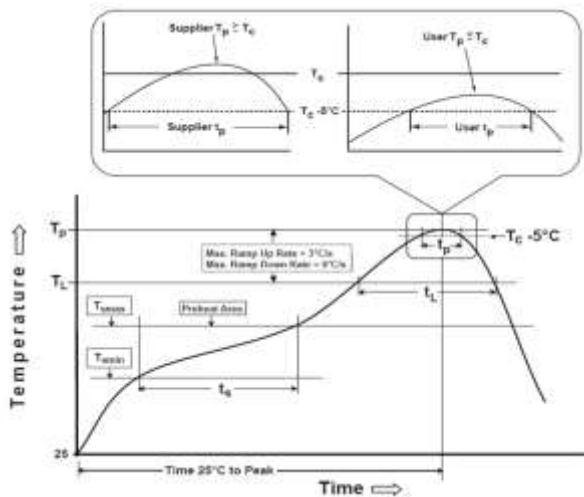
Recommended temperature profiles for lead free re-flow soldering in Figure 1, Table 1.1 & 1.2 (J-STD-020F).

6-2. Iron Reflow

Products attachment with a soldering iron is discouraged due to the inherent process control limitations. In the event that a soldering iron must be employed the following precautions are recommended (Figure 2).

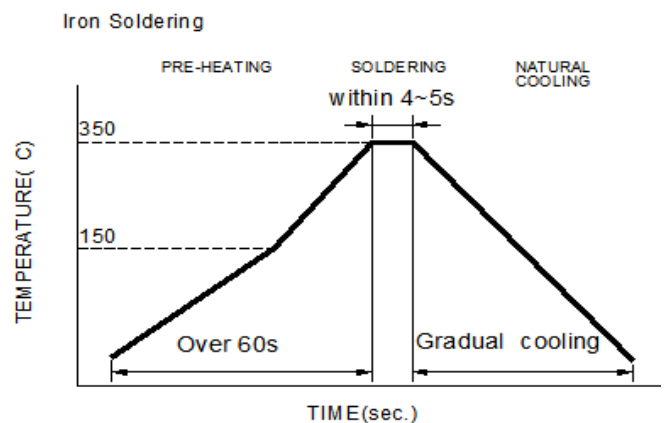
Note:

- (a) Preheat circuit and products to 150°C.
- (b) 350°C tip temperature (Max.)
- (c) Never contact the ceramic with the iron tip
- (d) 1.0mm tip diameter (Max.)
- (e) Use a 20 watt soldering iron with tip diameter of 1.0mm
- (f) Limit soldering time to 4~5 sec.



Reflow times: 3 times Max

Figure 1: IR Soldering Reflow



Iron Soldering times : 1 times max

Figure 2: Iron soldering temperature profiles

NOTE: Specifications subject to change without notice. Please check our website for latest information.

**Table (1.1) Reflow Profiles**

Profile Type:	Pb-Free Assembly
Preheat	
-Temperature Min ( $T_{smin}$ )	150°C
-Temperature Max ( $T_{smax}$ )	200°C
-Time ( $t_s$ ) from ( $T_{smin}$ to $T_{smax}$ )	60-120seconds
Ramp-up rate ( $T_L$ to $T_p$ )	3°C /second max.
Liquids temperature ( $T_L$ )	217°C
Time ( $t_L$ ) maintained above $T_L$	60-150 seconds
Classification temperature ( $T_c$ )	See Table (1.2)
Time ( $t_p$ ) at $T_c - 5^\circ\text{C}$ ( $T_p$ should be equal to or less than $T_c$ .)	< 30 seconds
Ramp-down rate ( $T_p$ to $T_L$ )	6°C /second max.
Time 25°C to peak temperature	8 minutes max.

**T<sub>p</sub>**: maximum peak package body temperature, **T<sub>c</sub>**: the classification temperature.

For user (customer) **T<sub>p</sub>** should be equal to or less than **T<sub>c</sub>**.

**Table (1.2) Package Thickness/Volume and Classification Temperature ( $T_c$ )**

	Package Thickness	Volume mm <sup>3</sup> <350	Volume mm <sup>3</sup> 350-2000	Volume mm <sup>3</sup> >2000
PB-Free Assembly	<1.6mm	260°C	260°C	260°C
	1.6-2.5mm	260°C	250°C	245°C
	≥2.5mm	250°C	245°C	245°C

Reflow is referred to standard IPC/JEDEC J-STD-020F.

### 6-3. Soldering Volume

Accordingly increasing the solder volume, the mechanical stress to product is also increased. Exceeding solder volume may cause the failure of mechanical or electrical performance. Solder shall be used not to be exceeded as shown in the Figure below.

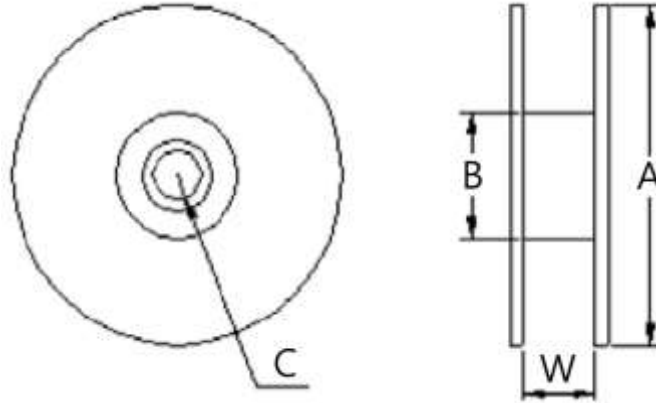
Minimum fillet height = soldering thickness + 25% product height.



NOTE: Specifications subject to change without notice. Please check our website for latest information.

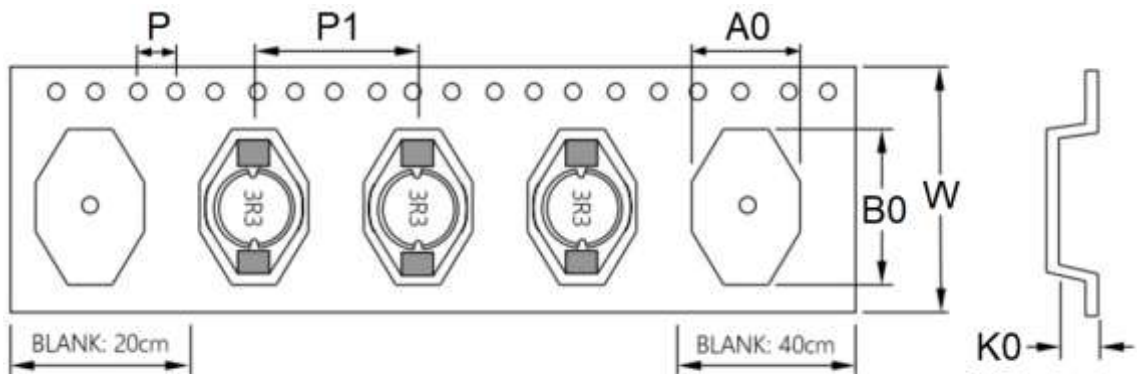
7. Packaging Information

7-1. Reel Dimension (Unit: mm)



Type	A	B	C	W
13"x24mm	330.0 Ref	100.0 Ref	13.0 Ref	24.5 Ref

7-2. Tape Dimension (Unit: mm)



Material: black carrier tape, brown self-adhesive tape

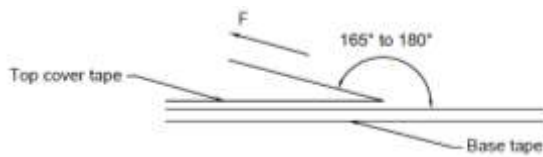
P	P1	A0	B0	W	K0
4.0±0.1	12.0±0.1	8.5±0.1	11.2±0.1	24.0±0.3	5.5±0.1

NOTE: Specifications subject to change without notice. Please check our website for latest information.

### 7-3. Packaging Quantity (Unit: Pcs)

Chip/ Reel	1,000
Middle Carton	1,000
Big Carton	4,000

### 7-4. Tearing Off Force



The force for tearing off cover tape is according to the follow table, in the arrow direction under the following conditions.

(Referenced ANSI/EIA-481-D-2008 of 4.11 standard)

Room Temp. (°C)	Room Humidity (%)	Room atm (hPa)	Tearing Speed (mm/min)
5~35	45~85	860~1060	300±10

Tape Size	8 mm	12 to 56 mm	72 mm or Wider
Tearing Off Force (grams)	10~100	10~130	10~150

## Application Notice

#### 1. Storage Conditions

To maintain the solderability of terminal electrodes:

- (a) Products meet IPC/JEDEC J-STD-020F standard-MSL, level 1.
- (b) Recommended products should be used within 12 months from the time of delivery.
- (c) The packaging material should be kept where no chlorine or sulfur exists in the air.

#### 2. Transportation

- (a) Products should be handled with care to avoid damage or contamination from perspiration and skin oils.
- (b) Vacuum pick up is strongly recommended for individual components.
- (c) Bulk handling should ensure that abrasion and mechanical shock are minimized.

NOTE: Specifications subject to change without notice. Please check our website for latest information.