

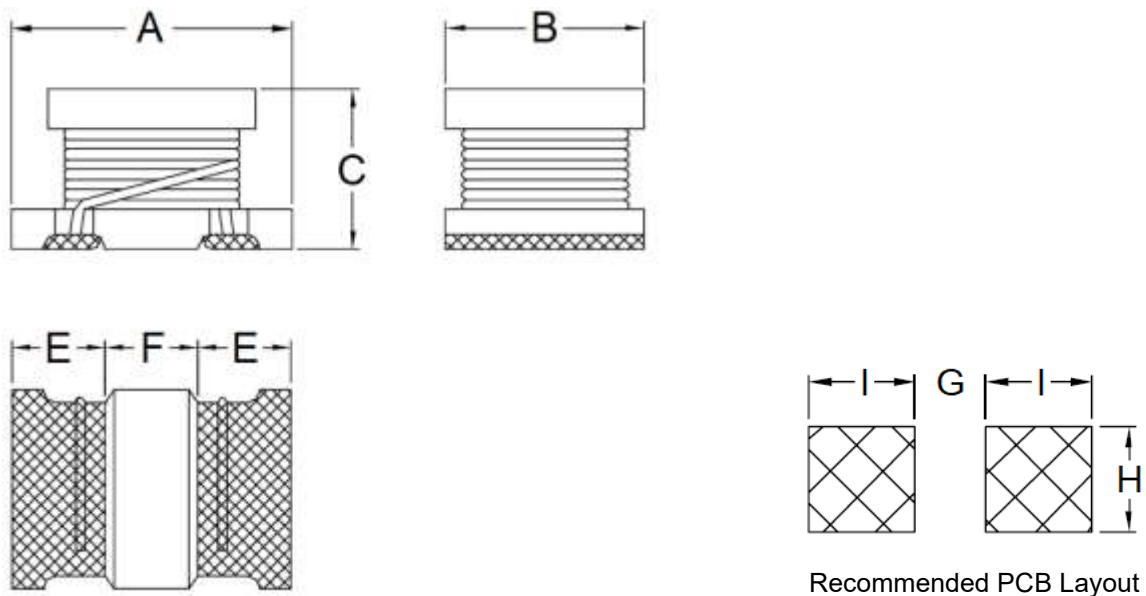
1. Part No. Expression

S D I 3 2 2 5 2 0 1 R 0 M F

(a) (b) (c) (d) (e)

- (a) Series Code
- (b) Dimension Code
- (c) Inductance Code
- (d) Tolerance Code
- (e) Packaging Code

2. Configuration & Dimensions (Unit: mm)

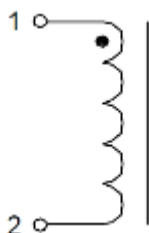


Note: The above PCB layout reference only.

A	B	C	E	F	G	H	I
3.2±0.3	2.5±0.2	2.0±0.3	0.7 Min	0.7 Min	1.0 Ref	2.0 Ref	1.5 Ref

NOTE: Specifications subject to change without notice. Please check our website for latest information.

3. Schematic



4. General Specifications

- (a) Operating Temp.: - 30°C to + 105°C (including self-temperature rise)
- (b) All test data referenced to 25°C ambient.
- (c) Storage Condition (Component in its packaging)
 - i) Temperature: -10°C to +40°C
 - ii) Humidity: Less than 60% RH

5. Electrical Characteristics

Part Number	Inductance (μH) @0A	Tolerance	Test Frequency (Hz)	Q Min	Test Frequency (Hz)	SRF (MHz) Min	DCR (Ω) Max	IDC (mA) Max
SDI322520-1R0□F	1.0	M	1M	20	1M	100.0	0.5	445
SDI322520-1R2□F	1.2	M	1M	20	1M	100.0	0.6	425
SDI322520-1R5□F	1.5	M, K	1M	20	1M	75.0	0.6	400
SDI322520-1R8□F	1.8	M, K	1M	20	1M	60.0	0.7	390
SDI322520-2R2□F	2.2	M, K	1M	20	1M	50.0	0.8	370
SDI322520-2R7□F	2.7	M, K	1M	20	1M	43.0	0.9	320
SDI322520-3R3□F	3.3	M, K	1M	20	1M	38.0	1.0	300
SDI322520-3R9□F	3.9	M, K	1M	20	1M	35.0	1.1	290

Note:

Tolerance Code: J=±5%, K=±10%, M=±20%

NOTE: Specifications subject to change without notice. Please check our website for latest information.

Part Number	Inductance (μH) @0A	Tolerance	Test Frequency (Hz)	Q Min	Test Frequency (Hz)	SRF (MHz) Min	DCR (Ω) Max	IDC (mA) Max
SDI322520-4R7□F	4.7	M, K	1M	20	1M	31.0	1.2	270
SDI322520-5R6□F	5.6	M, K	1M	20	1M	28.0	1.3	250
SDI322520-6R8□F	6.8	M, K	1M	20	1M	25.0	1.5	240
SDI322520-8R2□F	8.2	M, K	1M	20	1M	23.0	1.6	225
SDI322520-100□F	10.0	K, J	1M	35	1M	20.0	1.8	190
SDI322520-120□F	12.0	K, J	1M	35	1M	18.0	2.0	180
SDI322520-150□F	15.0	K, J	1M	35	1M	16.0	2.2	170
SDI322520-180□F	18.0	K, J	1M	35	1M	15.0	2.5	165
SDI322520-220□F	22.0	K, J	1M	35	1M	14.0	2.8	150
SDI322520-270□F	27.0	K, J	1M	35	1M	13.0	3.1	125
SDI322520-330□F	33.0	K, J	1M	40	1M	12.0	3.5	115
SDI322520-390□F	39.0	K, J	1M	40	1M	11.0	3.9	110
SDI322520-470□F	47.0	K, J	1M	40	1M	11.0	4.3	100
SDI322520-560□F	56.0	K, J	1M	40	1M	10.0	4.9	85
SDI322520-680□F	68.0	K, J	1M	40	1M	9.0	5.5	80
SDI322520-820□F	82.0	K, J	1M	40	1M	8.5	6.2	70
SDI322520-101□F	100.0	K, J	1M	40	796K	8.0	7.0	70
SDI322520-121□F	120.0	K, J	1M	40	796K	7.5	8.0	75
SDI322520-151□F	150.0	K, J	1M	40	796K	7.0	9.3	70
SDI322520-181□F	180.0	K, J	1M	40	796K	6.0	10.2	65
SDI322520-221□F	220.0	K, J	1M	40	796K	5.5	11.8	65
SDI322520-271□F	270.0	K, J	1M	40	796K	5.0	12.5	65
SDI322520-331□F	330.0	K, J	1M	40	796K	5.0	13.0	65
SDI322520-391□F	390.0	K, J	1M	50	796K	5.0	22.0	50
SDI322520-471□F	470.0	K, J	1K	50	796K	5.0	25.0	45
SDI322520-561□F	560.0	K, J	1K	50	796K	5.0 (Ref)	28.0	40

Note:

Tolerance Code: J=±5%, K=±10%, M=±20%

NOTE: Specifications subject to change without notice. Please check our website for latest information.

6. Soldering Specification

Mildly activated rosin fluxes are preferred. Our terminations are suitable for re-flow soldering systems. If hand soldering cannot be avoided, the preferred technique is the utilization of hot air soldering tools.

6-1. IR Soldering Reflow

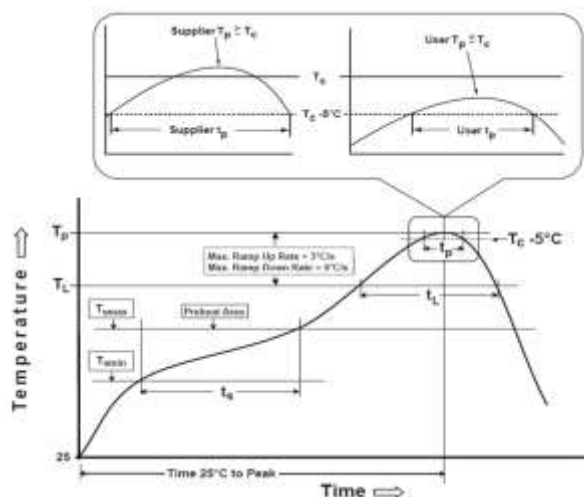
Recommended temperature profiles for lead free re-flow soldering in Figure 1, Table 1.1 & 1.2 (J-STD-020F).

6-2. Iron Reflow

Products attachment with a soldering iron is discouraged due to the inherent process control limitations. In the event that a soldering iron must be employed the following precautions are recommended (Figure 2).

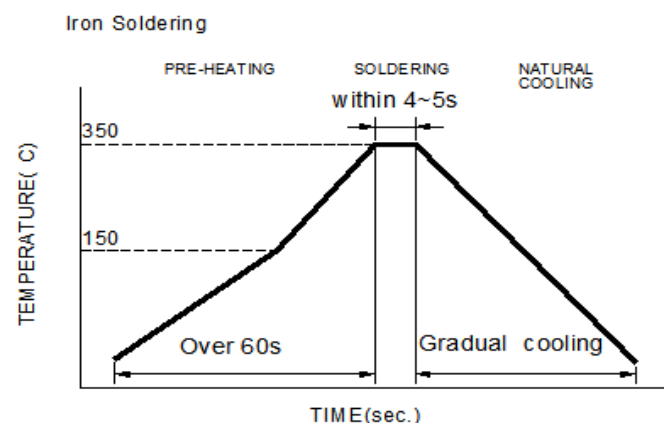
Note:

- (a) Preheat circuit and products to 150°C.
- (b) 350°C tip temperature (Max.)
- (c) Never contact the ceramic with the iron tip
- (d) 1.0mm tip diameter (Max.)
- (e) Use a 20 watt soldering iron with tip diameter of 1.0mm
- (f) Limit soldering time to 4~5 sec.



Reflow times: 3 times Max

Figure 1: IR Soldering Reflow



Iron Soldering times : 1 times max

Figure 2: Iron soldering temperature profiles

NOTE: Specifications subject to change without notice. Please check our website for latest information.

Table (1.1) Reflow Profiles

Profile Type:	Pb-Free Assembly
Preheat	
-Temperature Min (T_{smin})	150°C
-Temperature Max (T_{smax})	200°C
-Time (t_s) from (T_{smin} to T_{smax})	60-120seconds
Ramp-up rate (T_L to T_p)	3°C /second max.
Liquids temperature (T_L)	217°C
Time (t_L) maintained above T_L	60-150 seconds
Classification temperature (T_c)	See Table (1.2)
Time (t_p) at $T_c - 5^\circ\text{C}$ (T_p should be equal to or less than T_c .)	< 30 seconds
Ramp-down rate (T_p to T_L)	6°C /second max.
Time 25°C to peak temperature	8 minutes max.

T_p: maximum peak package body temperature, **T_c**: the classification temperature.

For user (customer) **T_p** should be equal to or less than **T_c**.

Table (1.2) Package Thickness/Volume and Classification Temperature (T_c)

	Package Thickness	Volume mm ³ <350	Volume mm ³ 350-2000	Volume mm ³ >2000
PB-Free Assembly	<1.6mm	260°C	260°C	260°C
	1.6-2.5mm	260°C	250°C	245°C
	≥2.5mm	250°C	245°C	245°C

Reflow is referred to standard IPC/JEDEC J-STD-020F.

6-3. Soldering Volume

Accordingly increasing the solder volume, the mechanical stress to product is also increased. Exceeding solder volume may cause the failure of mechanical or electrical performance. Solder shall be used not to be exceeded as shown in the Figure below.

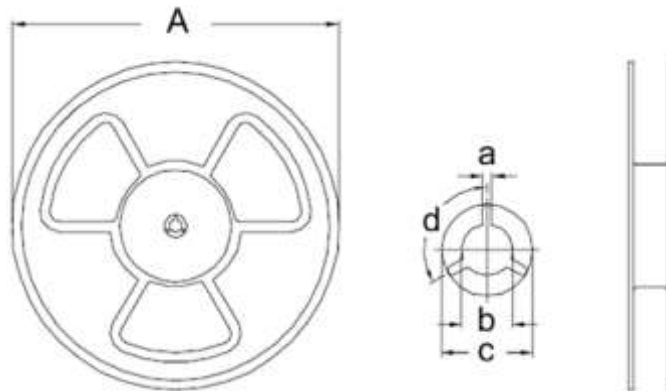
Minimum fillet height = soldering thickness + 25% product height.



NOTE: Specifications subject to change without notice. Please check our website for latest information.

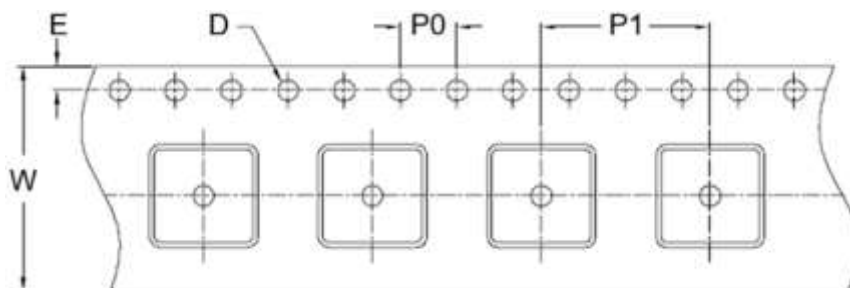
7. Packaging Information

7-1. Reel Dimension (Unit: mm)

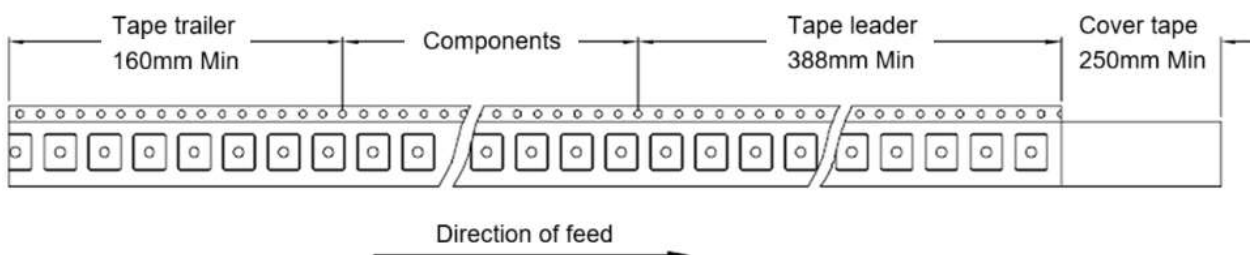


Type	A	a	b	c	d
7"x8mm	178.0 Ref	2.5 Ref	13.0 Ref	23.0 Ref	120°

7-2. Tape Dimension (Unit: mm)



W	E	D	P0	P1
8.00 Ref	1.75±0.10	1.50+0.10/-0.00	4.00±0.10	12.00 Ref

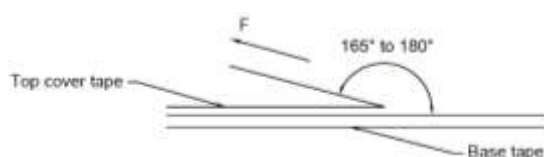


NOTE: Specifications subject to change without notice. Please check our website for latest information.

7-3. Packaging Quantity (Unit: Pcs)

Inner: Reel		Outer: Carton		
Qty (Pcs)	G.W. (Kg)	Qty (Pcs)	G.W. (Kg)	Size (cm)
2,000	0.18	120,000	15	45 x 38 x 21

7-4. Tearing Off Force



The force for tearing off cover tape is according to the follow table, in the arrow direction under the following conditions.

(Referenced ANSI/EIA-481-D-2008 of 4.11 standard)

Room Temp. (°C)	Room Humidity (%)	Room atm (hPa)	Tearing Speed (mm/min)
5~35	45~85	860~1060	300±10

Tape Size	8 mm	12 to 56 mm	72 mm or Wider
Tearing Off Force (grams)	10~100	10~130	10~150

Application Notice

1. Storage Conditions

To maintain the solderability of terminal electrodes:

- (a) Products meet IPC/JEDEC J-STD-020F standard-MSL, level 1.
- (b) Recommended products should be used within 12 months from the time of delivery.
- (c) The packaging material should be kept where no chlorine or sulfur exists in the air.

2. Transportation

- (a) Products should be handled with care to avoid damage or contamination from perspiration and skin oils.
- (b) Vacuum pick up is strongly recommended for individual components.
- (c) Bulk handling should ensure that abrasion and mechanical shock are minimized.

NOTE: Specifications subject to change without notice. Please check our website for latest information.